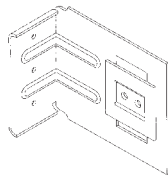


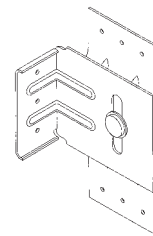
CURTAINWALL DEFLECTION SOLUTIONS

- Provides lateral support for curtain wall systems.
- One of the highest tested load capacities available.
- Direct attachment to web and support.
- Most clips are reversible.
- Compatible to both welding and mechanical connections.

2001



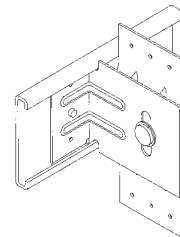
Deflection Clip 1500



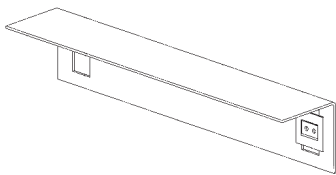
Deflection Clip 1700



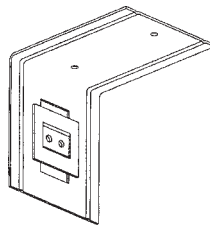
Drift Clip 1500



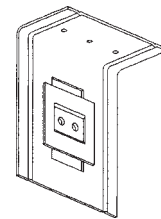
Drift Clip 1700



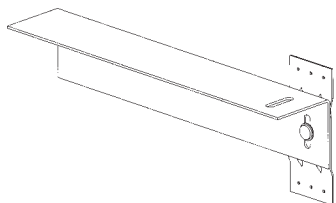
Super Strut 1500



Exterior Top Track Clip 1500



Interior Top Track Clip 450



Super Strut 1700

Super Stud

Building Products, Inc.

4-57 26th Ave. • Astoria, NY 11102

CALL 1-866-STUD CLP or 718-545-5700

7 8 8 3 2 5 7
Visit Our Web Site at www.BuySuperStud.com

E-Mail: clps@buysuperstud.com

ROGER A. LaBOUBE, Ph.D., P.E.
STUCTURAL ENGINEERING

Office Address:
University of Missouri-Rolla
Department of Civil Engineering
Rolla, MO 65409
Phone: (573) 341-4481
E-mail: LABOUBE@UMR.EDU

April 2000

Super Stud Building Products, Inc.
8-01 26th Avenue
Astoria, NY 11102

Gentlemen:

This letter is to certify that the design load values for Super Stud Building Products Deflection Clips were developed under my supervision. I witnessed tests, and based on the test results developed recommendations for design loads.

The test protocol followed the guidelines prescribed by ASTM D1761 *Standards Specification Testing and Establishing Allowable Loads for Joist Hangers*. The ASTM D1761 protocol is similar to the ICBO Evaluation Services test protocol *Acceptance Criteria for Joist Hangers and Similar Devices*.

The design loads are based on the test results with due consideration given to the serviceability of the wall system.

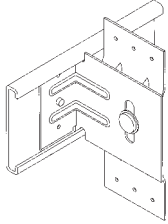
Cordially yours,

Roger A LaBoube

Super Stud Clip Series Curtain Wall Deflection Solutions

Drift Clip

HVDC 1700



HVDC 1500



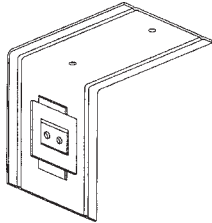
When Seismic Governs

SEE PAGES 6 - 8

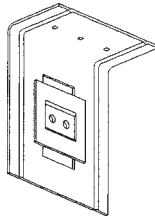
Exterior & Interior

Top Track Clip

ETTC 1500



ITTC 450

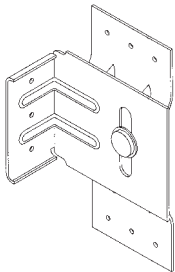


Head of wall condition

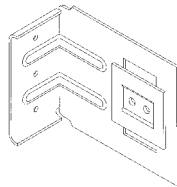
SEE PAGES 10 - 12

Deflection Clip

DC 1700



DC 1500

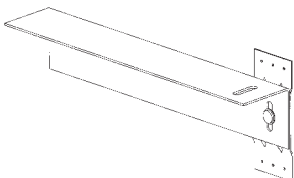


By - Pass Structure

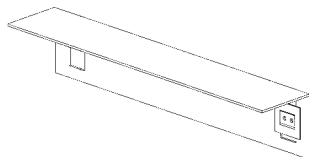
SEE PAGES 14 - 16

Super Strut[®]

DS 1700



DS 1500



Offset - By - Pass

SEE PAGES 18 - 20

VERTICAL DEFLECTION CONDITION

A curtainwall is typically designed as a non-vertically loaded exterior wall supported by the structural frame of the building. A steel clip angle is generally used to make the connection between the structural frame and the cold-formed steel curtainwall member. Typically the curtainwall member is a C-section.

To permit relative deflection of the structural frame and to avoid the application of axial load on the cold-formed steel curtainwall member, a slide clip is recommended. Super Stud Building Products' family of vertical and drift deflection clips has been developed to enable the build-

ing designer to isolate the structural deflections from the curtain-wall systems and to prevent the application of axial load on the cold-formed steel curtainwall member.

The Super Stud Building Products' family of vertical and drift deflection clips enables a vertical movement in the structural frame of 3/4 inches up and down. The sliding mechanisms used by Super Stud Building Products' family of deflection clips unimpeded vertical movement between the structural frame and the cold-formed steel curtain-wall member. For deflection requirements greater than 3/4 inches non-standard clips can be provided.

LIMITED WARRANTY

Super Stud Building Products, Inc. warrants catalog products to be free from defects in material or manufacturing. Super Stud products are further warranted for adequacy of design when used in accordance with design limits in this catalog, and properly specified and installed. This warranty does not apply to uses not in compliance with specific applications and installation procedures set forth in this catalog, or to non-catalog or modified products.

All warranty obligations of Super Stud shall be limited, at the discretion of Super Stud, to repair or replacement of

the defective part. These remedies shall constitute Super Stud's sole obligation and sole remedy of purchaser under this warranty. In no event will Super Stud Building Products Inc. be responsible for incidental, consequential, or special loss or damage, however caused.

This warranty is expressly in lieu of all other warranties, express or implied, including warranties of merchantability or fitness for a particular purpose, all such other warranties being hereby expressly excluded.

TERMS & CONDITIONS OF SALE

PRODUCT USE

Products in this catalog are designed and manufactured for a specific purpose; therefore:

- a) products should not be used with other connectors not approved by a qualified designer.
- b) product modification or modifications made in installation procedures should only be made by a qualified designer.

Note: It becomes the sole responsibility of the designer when such alterations or modifications as mentioned above are in place.

INDEMNITY

Customers modifying products or installation procedures, or designing non-catalog products for fabrication by Super Stud Building Products, Inc., shall, regardless of a specific instruction to the user, indemnify, defend and hold harmless Super Stud Building Products Inc., for any and all claimed loss or damage occasioned in whole or in part by non-catalog or modified products.

NON-CATALOG AND MODIFIED PRODUCTS

Super Stud Building Products, Inc. should be consulted for any and all product applications requiring modification: particularly:

- a) connectors in hostile environments
- b) evidence of abnormal loading or erection requirements.

PLEASE NOTE THE FOLLOWING:

Super Stud Building Products, Inc., will:

- a) fabricate non-catalog products designed by the customer according to customer specifications.
- b) not provide a warranty, express or implied, on non-catalog products.
- c) not and does not make any representations regarding the stability of use or load carrying capacities on non-catalog products.
- d) require specific instructions regarding the modification product specifications, installation and use; by any and all of the parties modifying its products.

GENERAL NOTES

a) The selection of steel used by Super Stud Building Product's, Inc. is based on the products steel specifications, including weld-ability, form-ability, strength, thickness and finish. Unless otherwise specified, dimensions are in inches and loads are in lbs., our factory may be contacted for information regarding specific products.

b) Prior approval for the manufacture of non-catalog products must be obtained from Super Stud Building Products and submitted together with an engineered drawing for such products ordered.

c) All references are to self-drilling screws.

d) Stripped fastener connections. A screw fastener that strips the steel or screw threads will not take the design load. Prevent stripping by limiting torque applied and determine if the connection will perform as required.

PRECAUTIONS:

The following will jeopardize connections:

a) Do not overload by exceeding catalog loads.

b) Do not bend steel when installing; this may result in a fracture at the bend line. Fractured steel will not carry the load and must be replaced.

c) Please Note: Super Stud Building Products, Inc., reserves the right to change models, designs and/or specifications without notice or liability for such changes.

TESTING PROCEDURES:

Super Stud Building Products, Inc. participates in an extensive product testing program. This testing ensures that all published product loads are correct. Testing was conducted under the supervision of Roger A. La Boube, Ph.D.,P.E. Refer to page two of our catalog for more information regarding test procedures.

INSTRUCTIONS TO THE INSTALLER

a) All specified fasteners must be installed according to the instructions in this catalog. Incorrect fastener quantity, size, type, material, or finish may cause the connection to fail. Install all specified fasteners before loading the connection.

b) The use of proper safety equipment is essential.

c) Welding galvanized steel may produce harmful fumes, follow proper welding procedures and safety precautions.

INSTRUCTIONS TO THE DESIGNER

a) All of the products in this catalog were tested to failure. Three duplicate tests were performed for each material thickness and yield strength. The published loads are the SERVICEABLE ratings and are based on a maximum deflection limit of 1/8".

b) Super Stud Building Products strongly recommends the following addition to construction drawings and specifications: "Substitutions for Super Stud Building Products, Inc. deflection clips must be pre-approved in writing by the designer". A detailed accounting of substitutions being used must be added to the construction drawings and specifications.

DEFINITIONS

Allowable Load: The maximum design load that can be imposed on a connection. Loads in excess of the allowable load can cause unacceptable deformations.

Deflection: The distance a point, defined at test set-up, moves when a load is applied to a product.

Design Load: This calculates the maximum load imposed on a connection during the life of a structure.

THIS CATALOG MAY NOT BE REPRODUCED IN WHOLE OR IN PART WITHOUT THE PRIOR WRITTEN APPROVAL OF SUPER STUD BUILDING PRODUCTS, INC.



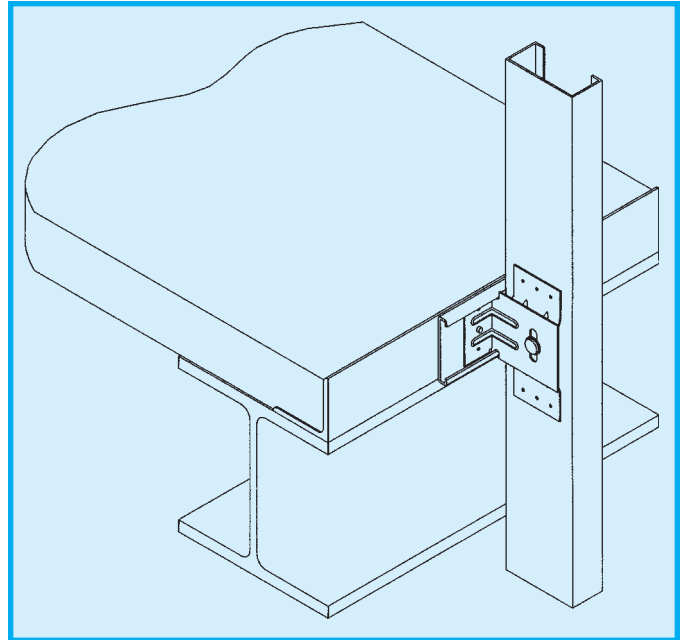
DRIFT CLIP HORIZONTAL/VERTICAL H/VDC-1700

Product Application:

The Drift Clip connects exterior curtainwall studs to the building structural frame, provides lateral support and allows vertical deflection of 3/4" up and down and also horizontal deflection of 1 1/2" right and left.

Product Attributes:

1. Non-corrosive stainless steel sliding mechanism.
2. Its ability to accommodate horizontal displacement between the face of support angle and aligned stud wall.
(Variations in main frame alignment)
3. Use of certified steel ASTM-A653-97 grade 40.
4. Clips may be installed in advance of the studs.
5. Its unique offset two piece construction allows for direct attachment to the web of stud, this eliminates flange "roll" resulting from the transfer of lateral loads to the stud.
6. Reinforced and edge geometry for enhanced performance.
7. Ease of installation using self tapping screws.
8. Reversible - not dependent on which direct the stud is turned.
9. Mechanical or weld attachment to main frame.
10. Backer Plate screw attachment to stud web.



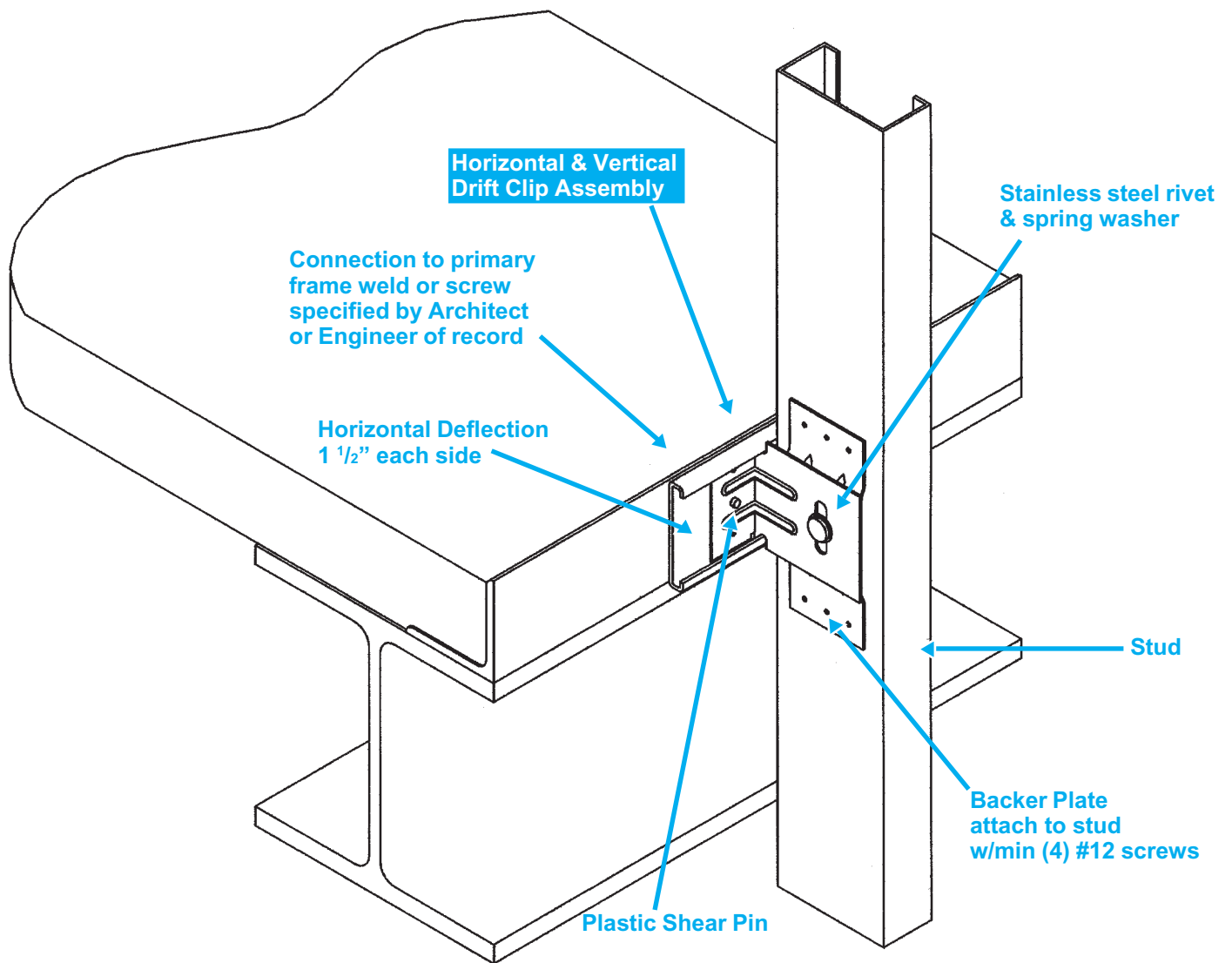
*Note: Maximum Stud Distance No Greater than 2" off primary face.

Allowable Design Load - Model No. H/VDC - 1700

Stud Material Thickness Inches (Ga). mm.	Stud Yield Strength (Fy). KSI (MPa).	Design Load Lbs. (kN)
0.033 (20) 0.84	33 (227)	1252 (5.56)
0.043 (18) 1.09	33 (227)	1508 (6.70)
0.054 (16) 1.37	50 (345)	1710 (7.60)
0.068 (14) 1.73	50 (345)	1710 (7.60)
0.097 (12) 2.46	50 (345)	1710 (7.60)

SUGGESTED DETAIL FOR INSTALLATION OF THE DRIFT CLIP 1700 HORIZONTAL AND VERTICAL

PATENT NO. 5.720.571



1 1/2" Right & Left Drift

Typical 3/4" Deflection Up & Down

Total 1 1/2" Deflection

Center Rivet in Slot to allow (Max) 3/4" Deflection of primary frame.

Position Rivet at bottom of slot to allow (MAX) 1 1/2" Deflection in one direction only.

Detail To Be Verified With Architect / Engineer Of Record Prior To Installation

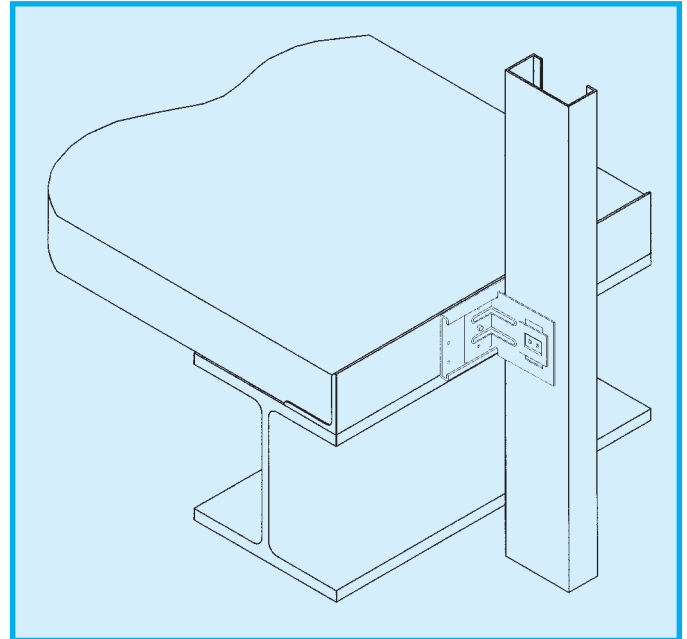
DRIFT CLIP HORIZONTAL/VERTICAL H/VDC-1500

Product Application:

The Drift Clip connects exterior curtainwall studs to the building structural frame, provides lateral support and allows vertical deflection of 3/4" up and down and also horizontal deflection of 1 1/2" right and left.

Product Attributes:

1. Its ability to accommodate horizontal displacement between the face of support angle and aligned stud wall. (Variations in main frame alignment)
2. Use certified steel ASTM-A653-97 grade 40.
3. Clips may be installed in advance of the studs.
4. Its unique offset two piece construction allows for direct attachment to the web of stud, this eliminates flange "roll" resulting from the transfer of lateral loads to the stud.
5. Reinforced and edge geometry for enhanced performance.
6. Ease of installation using self tapping screws.
7. Reversible - not dependent on which direction the stud is turned.
8. Mechanical or weld attachment to main frame.
9. Sliding mechanism screw attachment to stud web.



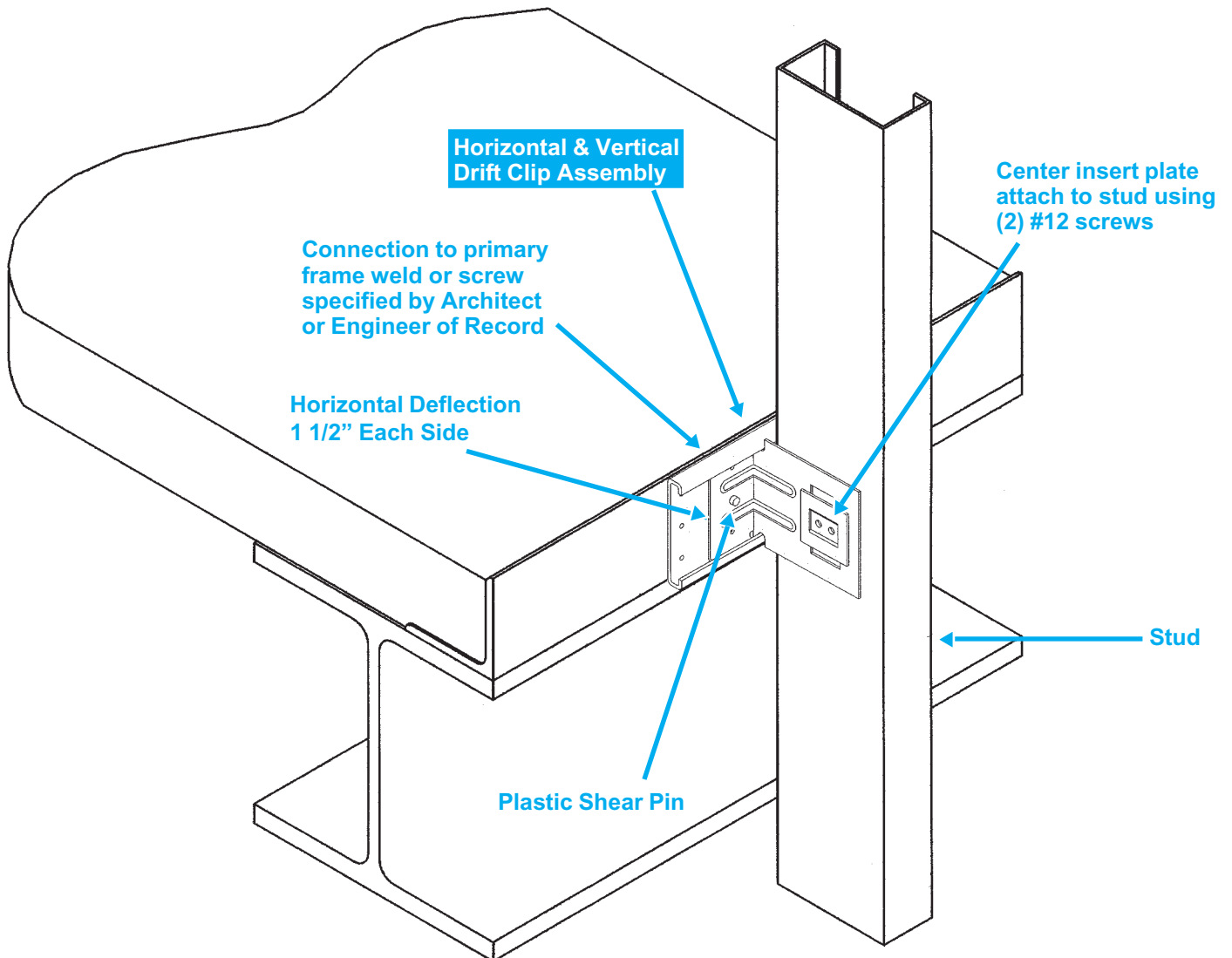
*Note: Maximum Stud Distance No Greater than 2" off primary face.

Allowable Design Load - Model No. H/VDC-1500

Stud Material Thickness Inches (Ga). mm.	Stud Yield Strength (Fy) KSI (MPa).	Design Load Lbs. (kN)
0.033 (20) 0.84	33 (227)	1108 (4.92)
0.043 (18) 1.09	33 (227)	1310 (5.60)
0.054 (16) 1.37	50 (345)	1510 (6.71)
0.068 (14) 1.73	50 (345)	1510 (6.71)
0.097 (12) 2.46	50 (345)	1510 (6.71)

SUGGESTED DETAIL FOR INSTALLATION OF THE DRIFT CLIP 1500 HORIZONTAL AND VERTICAL

PATENT PENDING



1 1/2" Right & Left Drift

Typical 3/4" Deflection Up & Down

Total 1 1/2" Deflection

Center Insert in Slot to allow (Max) 3/4" Deflection of primary frame.

Position Insert at bottom of slot to allow (MAX) 1 1/2" Deflection in one direction only.

Detail To Be Verified With Architect / Engineer Of Record Prior To Installation

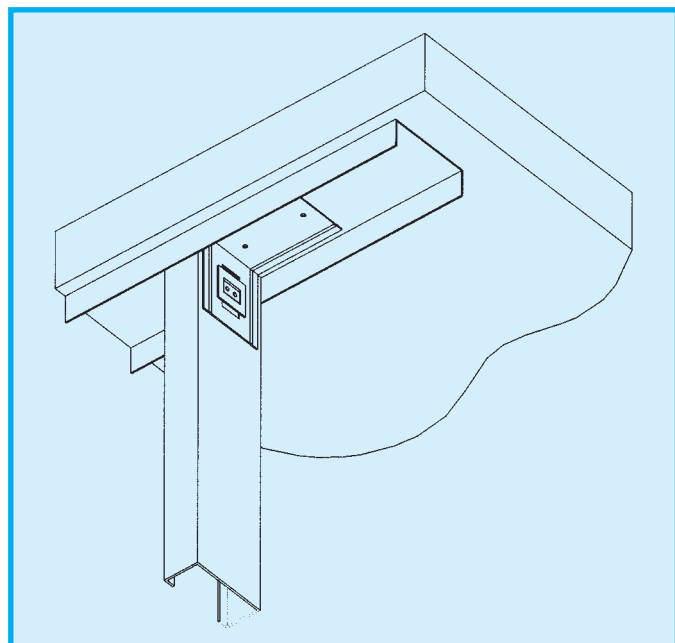
EXTERIOR TOP TRACK CLIP ETTC 1500

Product Application:

Top Track Slide Clip connects to exterior curtainwall head condition of stud to building structural frame and allows vertical deflection of 3/4" up and down not designed for axial load.

Product Attributes:

1. Resist horizontal forces caused by wind conditions in both positive & negative direction.
2. Use of certified steel ASTM A653-97 Grade 40
3. Ease of installation to primary structure frame is dependent upon base material concrete or steel and design configurations.
4. Sliding mechanism screw attachment to stud web.
5. Ease of installation using self tapping screws.
6. Adaptable to fire proofing variation. (See Fig. A)



Fire Rated Assemblies:

Many Fire Rated Assemblies with steel studs are based on the testing of standard track with a 1-1/4" flange supporting studs often cut 1/2" short at the top of wall. Walls designed to account for vertical deflection of the primary structure substitute the tested track with a deeper flange product fabricated from heavier steel. The Super Stud TOP TRACK CLIP eliminates product substitution of tested assemblies and provides an added mechanical attachment connecting the stud web to the primary structure. The Super Stud TOP TRACK CLIPS provide a proper transfer of horizontal forces through the web different than deep leg track assemblies that depend on a loose friction fit assembly with loads transferred through the flange.

Allowable Design Load - Model No. ETTC 1500 * (see notation below for stud size)

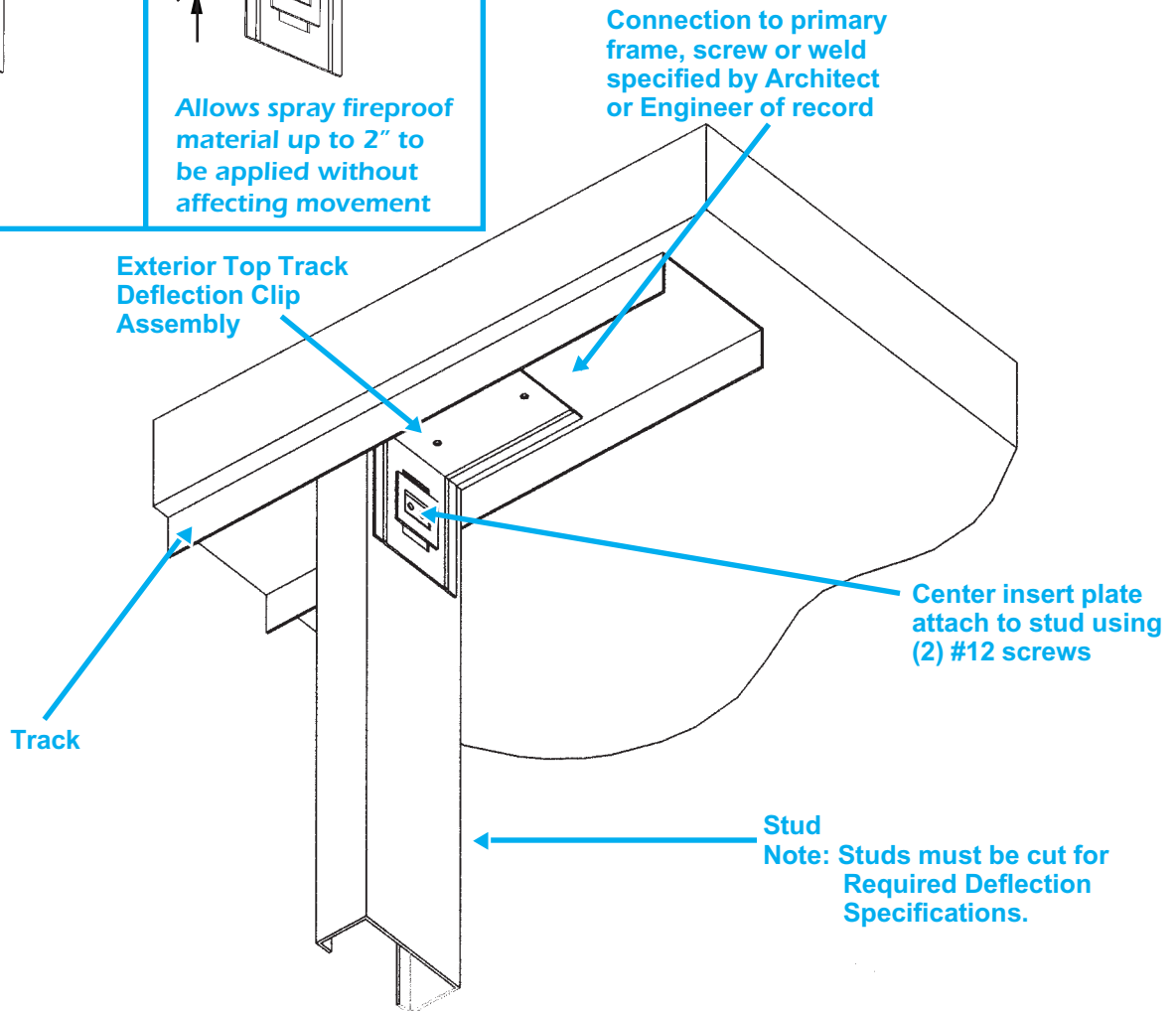
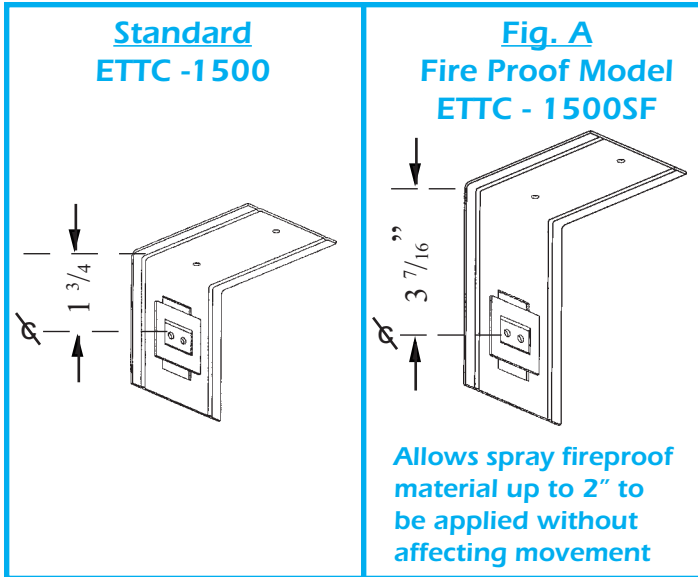
Stud Material Thickness Inches (Ga). mm.	Stud Yield Strength (Fy). KSI (MPa).	Design Load Lbs. (kN)
0.033 (20) 0.84	33 (227)	1108 (4.92)
0.043 (18) 1.09	33 (227)	1318 (5.86)
0.054 (16) 1.37	50 (345)	1510 (6.71)
0.068 (14) 1.73	50 (345)	1510 (6.71)
0.097 (12) 2.46	50 (345)	1510 (6.71)

* For - 3 5/8" to 4" stud wall - specify - 3 5/8" ETTC 1500
For - 6" to 8" stud wall - specify - 6" ETTC 1500

**Super
Stud**
Building Products, Inc.

SUGGESTED DETAIL FOR INSTALLATION OF THE EXTERIOR TOP TRACK DEFLECTION CLIP 1500

PATENT PENDING



1 1/2" Total Vertical Deflection One Way
3/4" Deflection Up & Down

**Detail To Be Verified With Architect / Engineer Of Record Prior
To Installation**

INTERIOR

TOP TRACK DEFLECTION CLIP

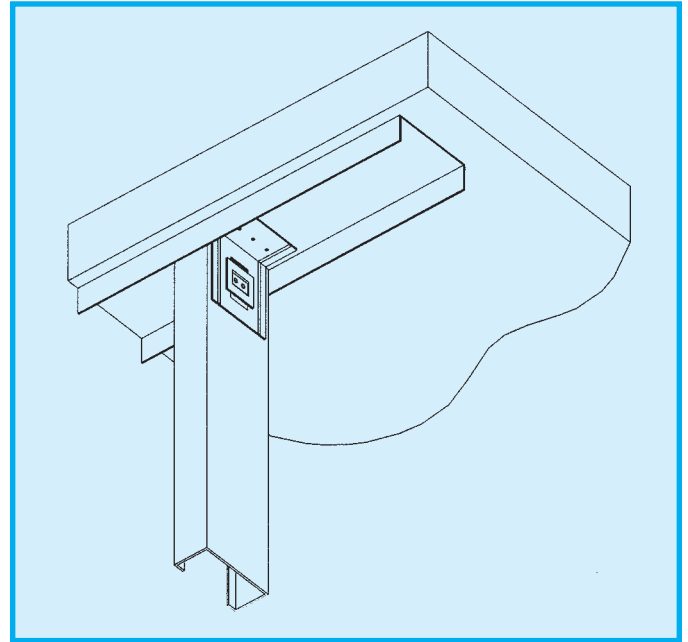
ITTC 450

Product Application:

The Top Track Clip secures interior drywall studs at head of wall which is top of wall to deck or building structural frame and allowing for vertical deflection of 3/4" up and down not designed for axial load.

Product Attributes:

1. Resist horizontal forces in both positive & negative direction.
2. Use of certified steel ASTM A 653-CSB.
3. Ease of installation to top of wall or to primary structural frame is dependent upon base material (concrete or steel) and design configurations.
4. Sliding mechanism screw attachment to stud web.

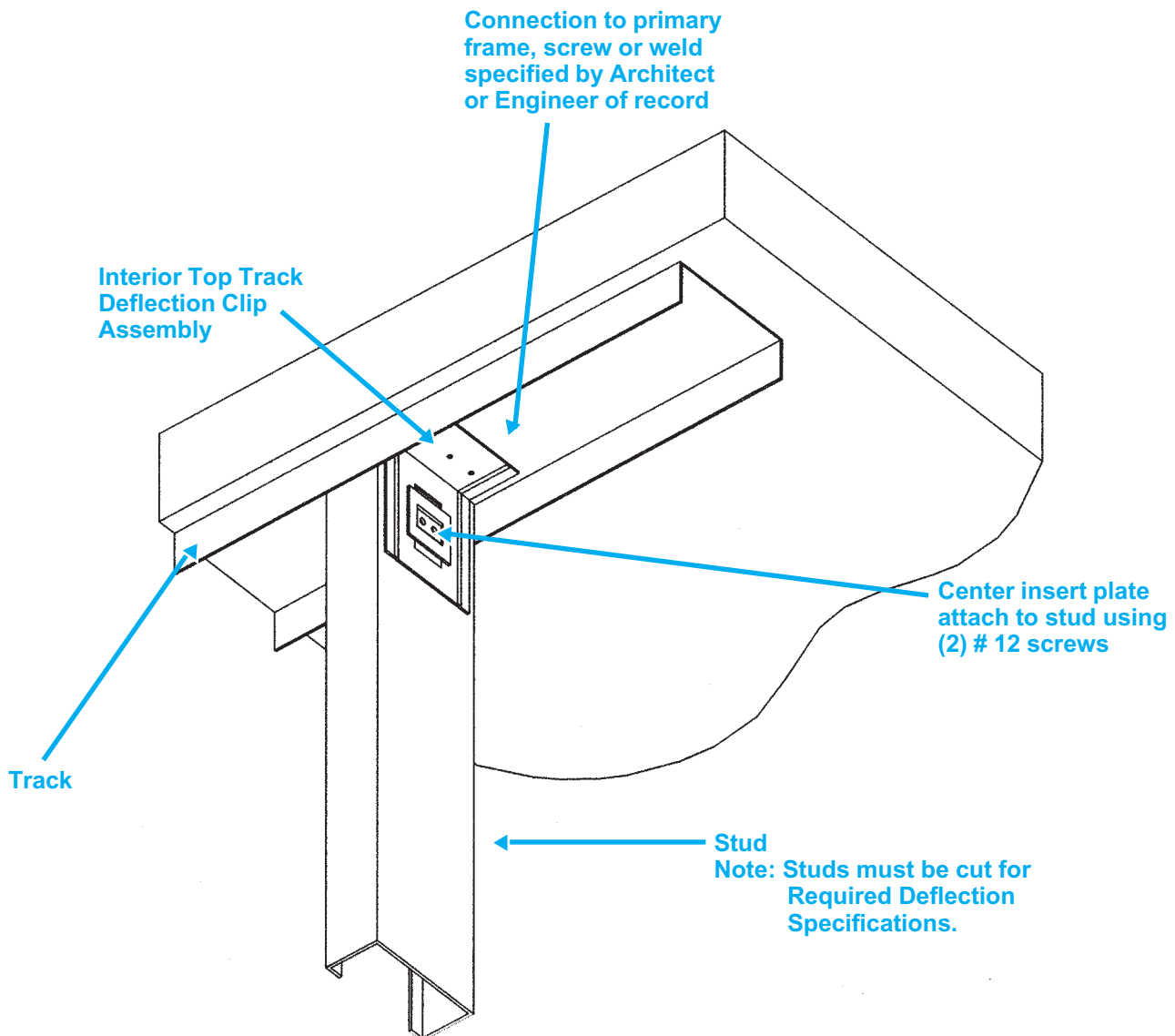


Allowable Vertical Design Load - Model No. ITTC 450 (for 3 1/2" to 6" studs)

Stud Material Thickness Inches (Ga). mm.	Stud Yield Strength (Fy). KSI (MPa).	Design Load Lbs. (kN)
0.019 (25) 0.48	33 (227)	180 (.79)
0.033 (20) 0.84	33 (227)	300 (1.33)
0.043 (18) 1.09	33 (227)	450 (1.99)

SUGGESTED DETAIL FOR INSTALLATION OF THE INTERIOR TOP TRACK DEFLECTION CLIP 450

PATENT PENDING



1 1/2" Total Vertical Deflection One Way
3/4" Deflection Up & Down

Detail To Be Verified With Architect / Engineer Of Record Prior
To Installation

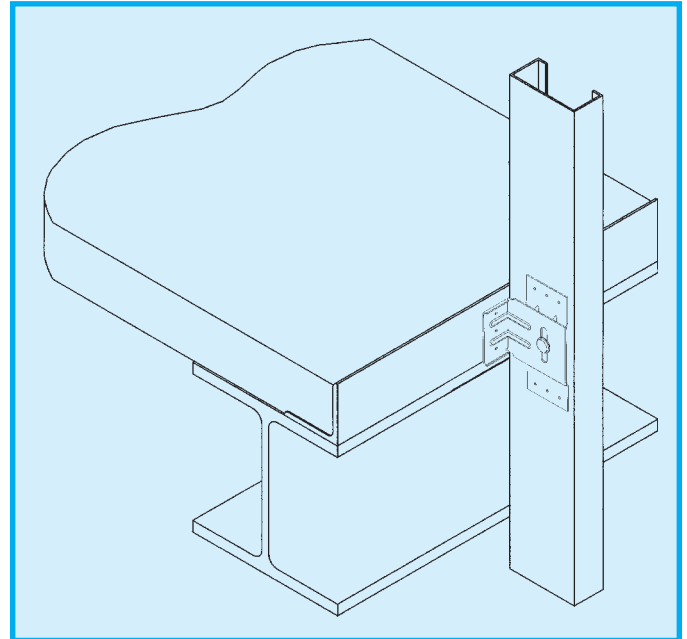
VERTICAL DEFLECTION CLIP DC 1700

Product Application:

Deflection Slide Clip connects exterior curtainwall stud to the building structural frame, provides lateral support and allows for vertical deflection of 3/4" up and down of the primary frame movement: not designed for axial load.

Product Attributes:

1. Non-corrosive stainless steel sliding mechanism.
2. Its ability to accommodate horizontal displacement between the face of support angles and an aligned stud wall.
(Variation in main frame alignment)
3. Use of certified steel ASTM A 653-97 grade 40.
4. Deflection Clip may be installed in advance of the stud.
5. Its unique offset, two piece construction allows for its direct attachment to the web of stud, this eliminates flange "roll" resulting from the transfer of lateral loads to the stud.
6. Reinforced and edge stiffened geometry for enhanced performance.
7. Ease of installation using self tapping screws.
8. Reversible - not dependent on which direction the stud is turned.
9. Mechanical or weld attachment to main frame.
10. Backer Plate screw attachment to stud web.



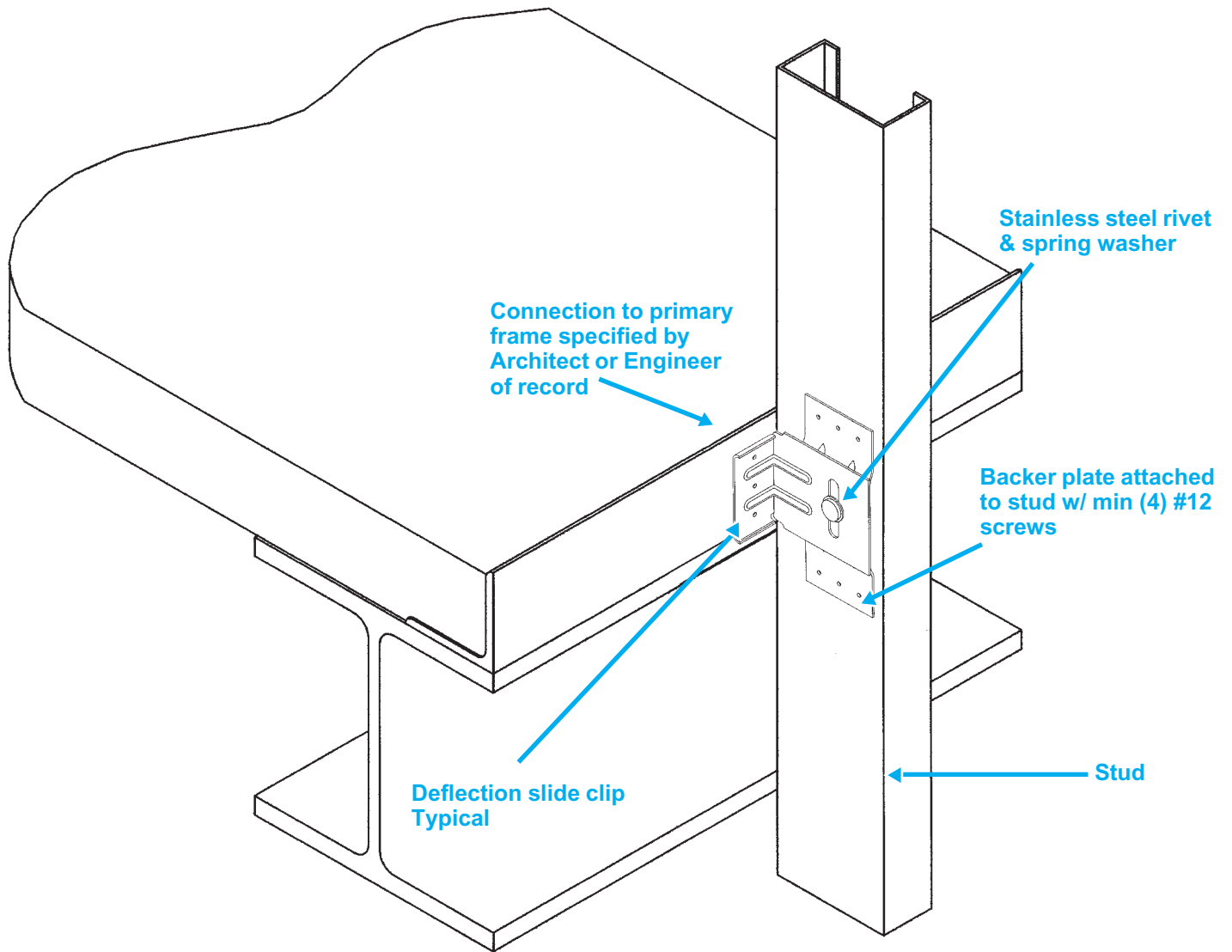
*Note: Maximum Stud Distance No Greater than 2" off primary face.

Allowable Design Load - Model No. DC 1700

Stud Material Thickness Inches (Ga). mm.	Stud Yield Strength (Fy). KSI (MPa).	Design Load Lbs. (kN)
0.033 (20) 0.84	33 (227)	1252 (5.56)
0.043 (18) 1.09	33 (227)	1508 (6.70)
0.054 (16) 1.37	50 (345)	1710 (7.60)
0.068 (14) 1.73	50 (345)	1710 (7.60)
0.097 (12) 2.46	50 (345)	1710 (7.60)

SUGGESTED DETAIL FOR INSTALLATION OF THE VERTICAL DEFLECTION CLIP 1700

PATENT NO. 5.720.571



Typical $\frac{3}{4}$ " Deflection Up & Down

Center Rivet in Slot to allow (Max) $\frac{3}{4}$ " Deflection of primary frame.

Total $1 \frac{1}{2}$ " Deflection

Position Rivet at bottom of slot to allow (MAX) $1 \frac{1}{2}$ " Deflection in one direction only.

Detail To Be Verified With Architect / Engineer Of Record Prior To Installation

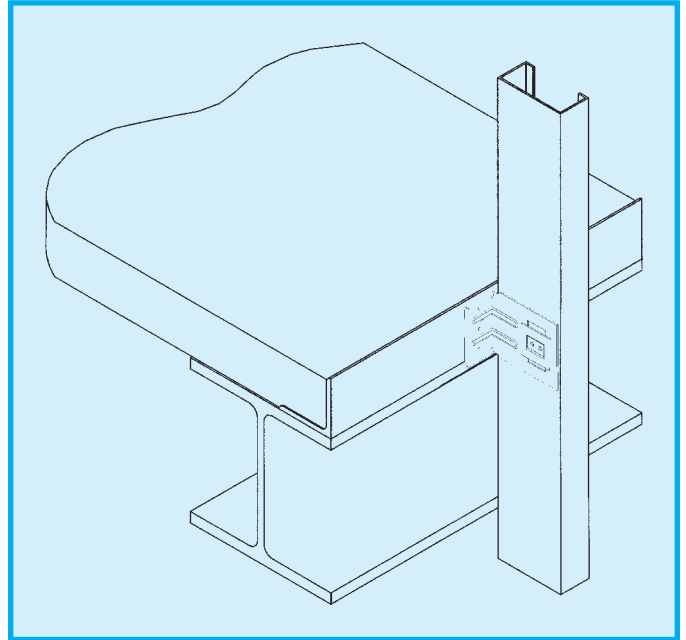
VERTICAL DEFLECTION CLIP DC 1500

Product Application:

Deflection Slide Clip connects exterior curtainwall stud to the building structural frame, provides lateral support and allows for vertical deflection of 3/4" up and down of the primary frame movement: not designed for axial load.

Product Attributes:

1. Its ability to accommodate horizontal displacement between the face of support angles and an aligned stud wall. (Variation in main frame alignment)
2. Use of certified steel ASTM A 653-97 grade 40.
3. Deflection Clip may be installed in advance of the stud.
4. Its unique offset, two piece construction allows for its direct attachment to the web of stud, this eliminates flange "roll" resulting from the transfer of lateral loads to the stud.
5. Reinforced and edge stiffened geometry for enhanced performance.
6. Ease of installation using self tapping screws.
7. Reversible - not dependent on which direction the stud is turned.
8. Mechanical or weld attachment to main frame.
9. Sliding mechanism screw attachment to stud web.



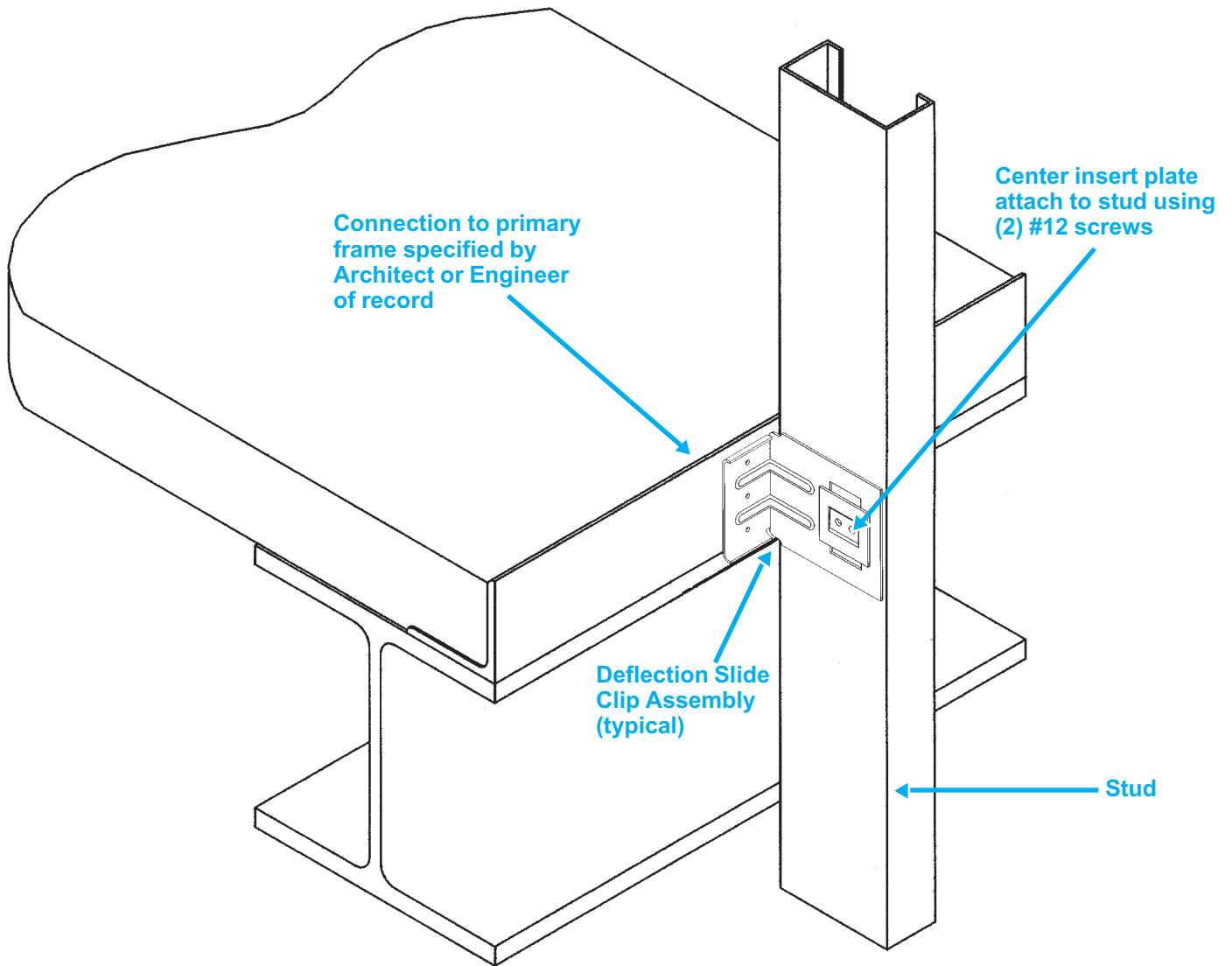
*Note: Maximum Stud Distance No Greater than 2" off primary face.

Allowable Design Load - Model No. DC 1500

Stud Material Thickness Inches (Ga). mm.	Stud Yield Strength (Fy). KSI (MPa).	Design Load Lbs. (kN)
0.033 (20) 0.84	33 (227)	1108 (4.92)
0.043 (18) 1.09	33 (227)	1318 (5.86)
0.054 (16) 1.37	50 (345)	1510 (6.71)
0.068 (14) 1.73	50 (345)	1510 (6.71)
0.097 (12) 2.46	50 (345)	1510 (6.71)

SUGGESTED DETAIL FOR INSTALLATION OF THE VERTICAL DEFLECTION CLIP 1500

PATENT PENDING



Typical $\frac{3}{4}$ " Deflection Up & Down

Center Insert in Slot to allow (Max) $\frac{3}{4}$ " Deflection of primary frame.

Total 1 $\frac{1}{2}$ " Deflection

Position Insert at bottom of slot to allow (MAX) 1 $\frac{1}{2}$ " Deflection in one direction only.

Detail To Be Verified With Architect / Engineer Of Record Prior To Installation

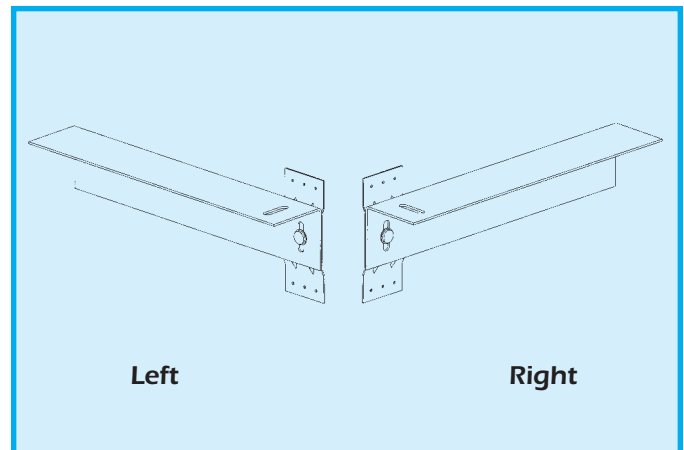
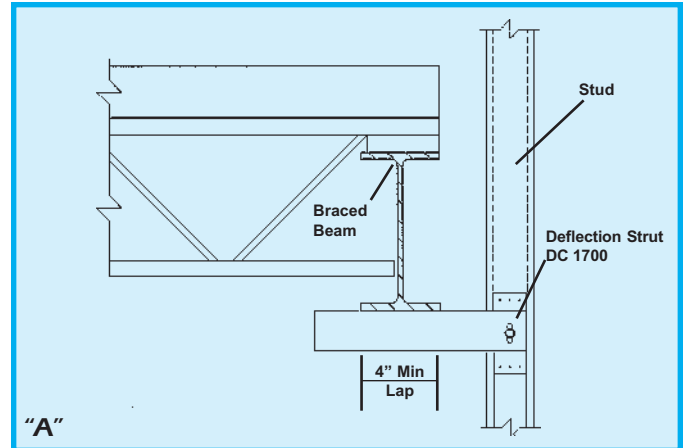
VERTICAL DEFLECTION STRUT DS 1700 - 16" RIGHT & LEFT

Product Application:

The Deflection Strut is used to make the transition of a curtainwall stud to a braced component of the primary frame. The tail end laps and connects to the structural component while front end is screw attached to the stud. The strut will provide for a vertical deflection of 3/4" up and down, not designed for axial loads.

Product Attributes:

1. Eliminates coordination headaches and expensive field modifications due to mis-alignment of support and stud wall.
2. Non-corrosive stainless steel sliding mechanism.
3. Provides lateral support and allows for vertical deflection.
4. Use of mill certified stud ASTMA653-97 Grade 40.
5. Backer Plate screw attachment to stud web.
6. Mechanical or weld attachment to main frame.
7. Standard strut is 16" long, special strut lengths can be provided.
8. Ease of installation using self tapping screws.



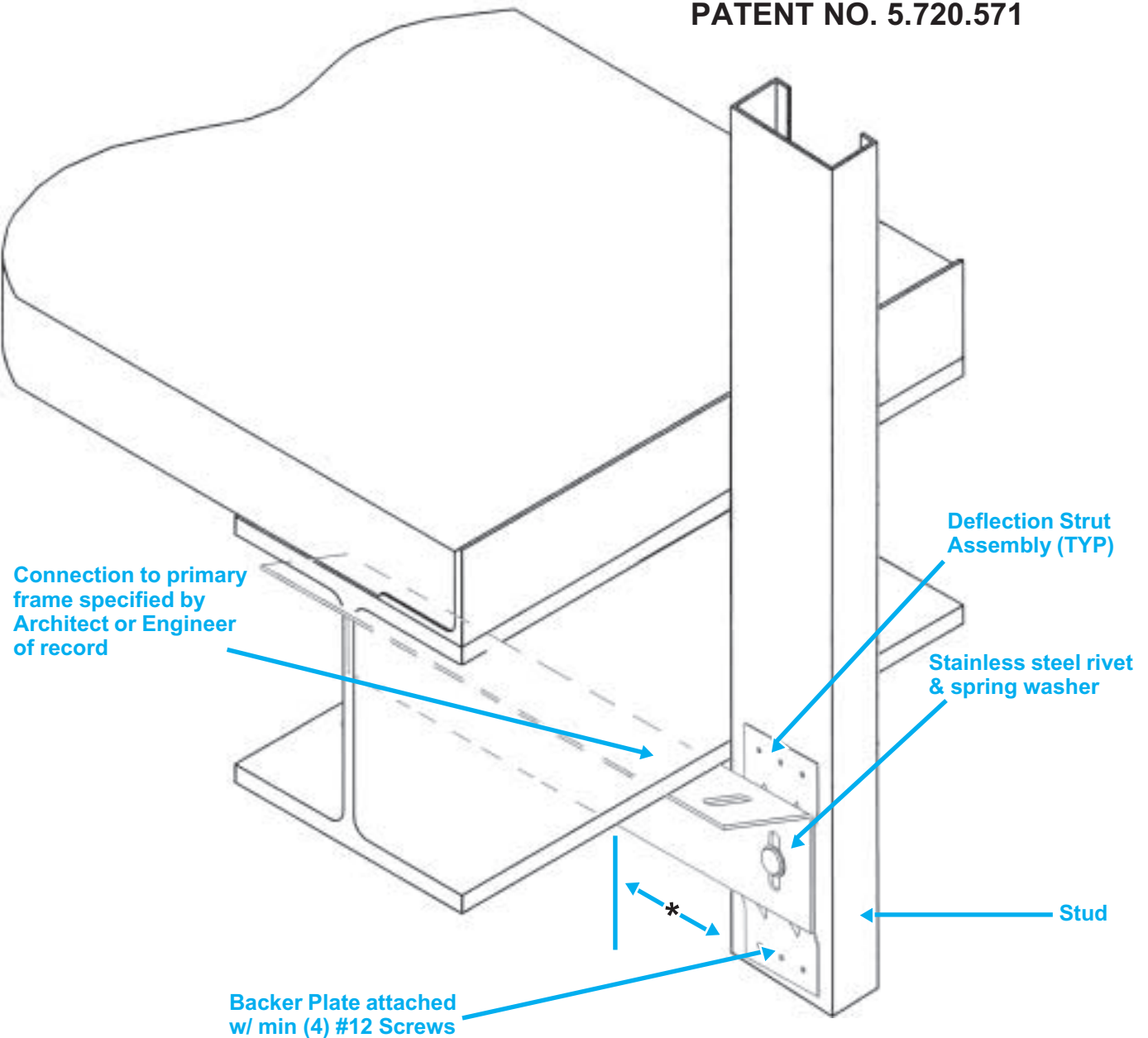
Note "A" To Designer: This is suggested design for DS Series. Check lateral load for attachment to beam.

Allowable Design Load - Model No. DS 1700, Right or Left

Stud Material Thickness Inches (Ga). mm.	Stud Yield Strength (Fy). KSI (MPa).	Design Load Lbs. (kN)
0.033 (20) 0.84	33 (227)	1252 (5.56)
0.043 (18) 1.09	33 (227)	1508 (6.70)
0.054 (16) 1.37	50 (345)	1710 (7.60)
0.068 (14) 1.73	50 (345)	1710 (7.60)
0.097 (12) 2.46	50 (345)	1710 (7.60)

SUGGESTED DETAIL FOR INSTALLATION OF THE VERTICAL DEFLECTION STRUT 1700 RIGHT OR LEFT

PATENT NO. 5.720.571



Typical $\frac{3}{4}$ " Deflection Up & Down

Total 1 $\frac{1}{2}$ " Deflection

Center Rivet in Slot to allow (Max) $\frac{3}{4}$ " Deflection of primary frame.

Position Rivet at bottom or top of slot to allow (MAX) 1 $\frac{1}{2}$ " Deflection in one direction only.

*Note: Suggested Stud Distance No Greater than 6" off primary face.

Detail To Be Verified With Architect / Engineer Of Record Prior To Installation

VERTICAL

DEFLECTION STRUT

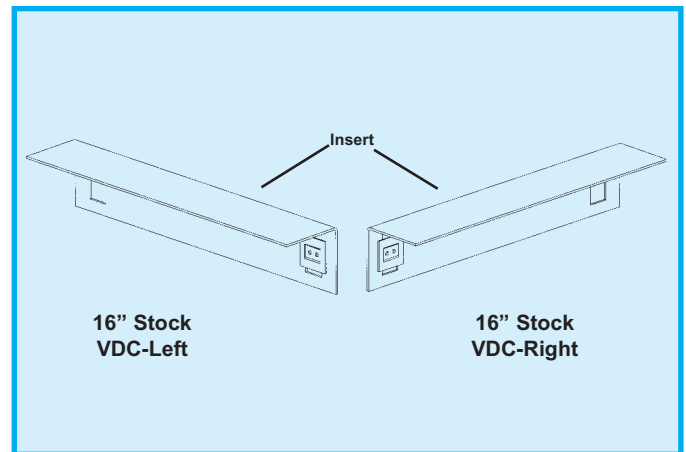
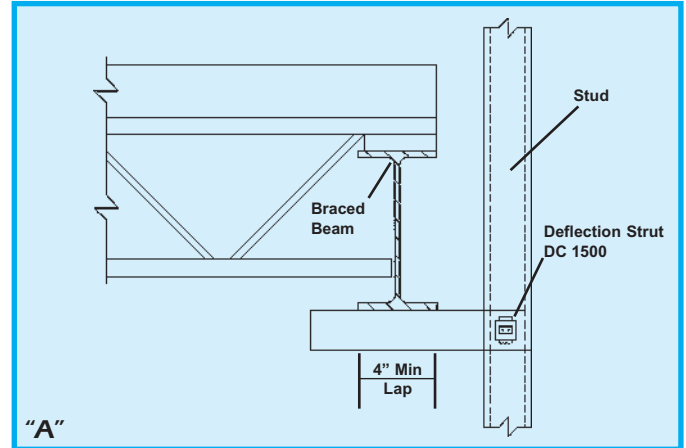
DS 1500 - 16" RIGHT & LEFT

Product Application:

The Deflection Strut is used to make the transition of a curtainwall stud to a braced component of the primary frame. The tail end laps and connects to the structural component while front end is screw attached to the stud. The strut will provide for a vertical deflection of 3/4" up and down, not designed for axial loads.

Product Attributes:

1. Eliminates coordination headaches and expensive field modification due to mis-alignment of support and stud wall.
2. Provides lateral support and allows for vertical deflection.
3. Use of mill certified stud ASTM A653-97 Grade 40.
4. Sliding mechanism screw attachment to stud web.
5. Mechanical or weld attachment to main frame.
6. Strut can be changed in the field to left or right by repositioning the insert.
7. Special strut lengths can be provided.
8. Ease of installation using self tapping screw.



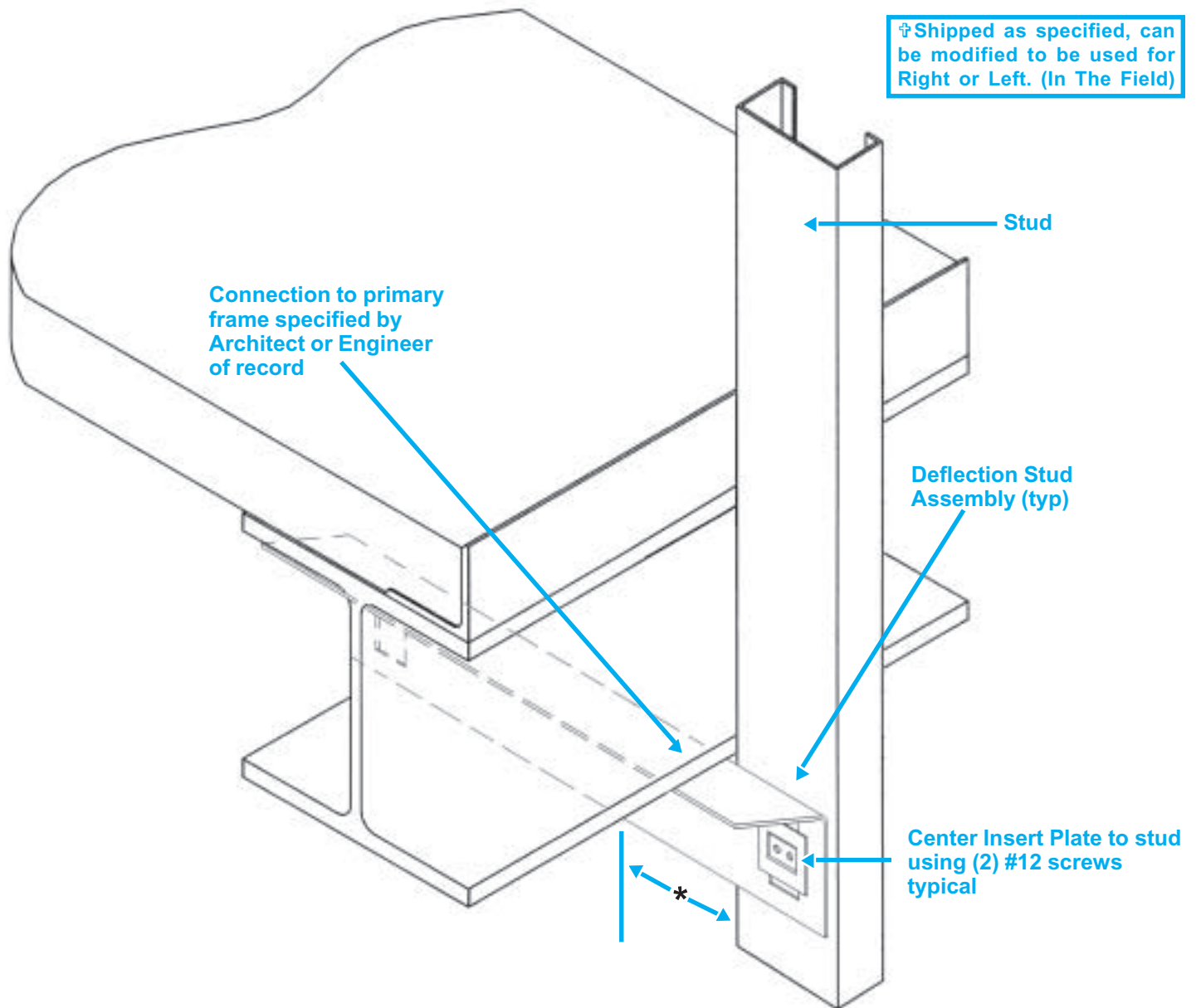
Note "A" To Designer: This is suggested design for DS Series. Check lateral load for attachment to beam.

Allowable Design Load - Model No. DS 1500, Right or Left

Stud Material Thickness Inches (Ga). mm.	Stud Yield Strength (Fy). KSI (MPa).	Design Load Lbs. (kN)
0.033 (20) 0.84	33 (227)	1108 (4.92)
0.043 (18) 1.09	33 (227)	1318 (5.86)
0.054 (16) 1.37	50 (345)	1510 (6.71)
0.068 (14) 1.73	50 (345)	1510 (6.71)
0.097 (12) 2.46	50 (345)	1510 (6.71)

SUGGESTED DETAIL FOR INSTALLATION OF THE VERTICAL DEFLECTION STRUT 1500 RIGHT OR LEFT †

PATENT PENDING



Typical $\frac{3}{4}$ " Deflection Up & Down

Total 1 $\frac{1}{2}$ " Deflection

Center Insert in Slot to allow (Max) $\frac{3}{4}$ " Deflection of primary frame.

Position Insert at bottom or top of slot to allow (MAX) 1 $\frac{1}{2}$ " Deflection in one direction only.

*Note: Suggested Stud Distance No Greater than 6" off primary face.

Detail To Be Verified With Architect / Engineer Of Record Prior To Installation

SPECIFICATIONS

Vertical Deflection Clip DC 1700 and 1500, Horizontal & Vertical Drift Clip HVDC 1700 and 1500, Vertical Deflection Strut DS 1700 and 1500, Exterior Top Track Clip ETTC 1500 and Interior Top Track Clip ITTC 450.

SECTION 05400 - COLD-FORMED METAL FRAMING

Or

SECTION 09110 - NON-LOAD-BEARING WALL FRAMING

THESE SPECIFICATIONS ARE INTENDED TO ASSIST DESIGN PROFESSIONALS IN MODIFYING CONSTRUCTION SPECIFICATION INSTITUTE (CSI) FORMATTED 3-PART SPECIFICATIONS TO INCLUDE SUPER STUD BUILDING PRODUCTS FRAMING ACCESSORIES IN SECTION 05400 AND 09110

WHILE SOME ARTICLE/PARAGRAPH TITLES MAY VARY DEPENDING ON THE PARTICULAR GUIDE SPECIFICATION BEING USED. THESE SPECIFICATIONS FOLLOW CSTS SECTION FORMAT AND THEREFORE MAY BE LISTED WITH MOST MASTER SPECIFICATION SYSTEMS WITH MINOR EDITING.

NOTES TO THE SPECIFIER ARE CONTAINED IN BOXES-DELETE FROM FINAL COPY

PART 1 - GENERAL

REFERENCES Article (if used);

VERIFY THAT ARTICLE INCLUDES AISI-AMERICAN IRON AND STEEL INSTITUTE SPECIFICATIONS FOR THE DESIGN OF COLD-FORMED STEEL STRUCTURAL MEMBERS AND ASTM A 653/A 653M - STANDARD SPECIFICATION FOR STEEL SHEET, ZINC-COATED (GALVANIZED) OR ZINC-IRON ALLOY COATED (GALVANNEALED) BY THE HOT-DIP PROCESS.

SYSTEM DESCRIPTION Article

Design non-axial load bearing framing to accommodate minimum 3/4 inch (19mm) vertical deflection. *Where seismic and/or other applications require movement parallel to the wall, accommodate minimum 1" horizontal deflection.

Part 2 - Products

SUBMITTALS Article

Product Data: VERIFY PRODUCT DATA OR ACCESSORIES IS INCLUDED.

Shop Drawings: INCLUDE THE FOLLOWING STATEMENT

Provide wall sections coordinated with Drawings showing anchorage and connection details for cold-formed metal framing and accessories.

Structural Calculators

VERIFY THAT SUBMITTALS INCLUDE STRUCTURAL CALCULATIONS

QUALITY ASSURANCE Article: INCLUDE THE FOLLOWING STATEMENTS.

Structural Properties: Calculate structural properties of cold-formed metal framing and accessories in accordance with AISI Specification for the Design of Cold-Formed Steel Structural Members.

QUALIFICATIONS Paragraph:

Provide structural design calculations sealed by a Professional Structural Engineer licenced in the state of Project Domaine.

PART 2 - PRODUCTS

MANUFACTURERS Article: INCLUDE THE FOLLOWING IN THE LIST OF MANUFACTURING PRODUCTS

Super Stud Building Products, Inc., contact 1-866-STUD CLP;
Vertical Deflection Clip DC 1700 and 1500, Horizontal & Vertical Drift Clip HVDC 1700 and 1500, Vertical Deflection Strut DS 1700 and 1500, Exterior Top Track Clip ETTC 1500 and Interior Top Track Clip ITTC 450.

ACCESSORIES Article: INCLUDE THE FOLLOWING STATEMENTS VERIFY THAT CLIPS ARE IDENTIFIED ON DRAWINGS IF STRUCTURAL DESIGN IS PERFORMED BY THE STRUCTURAL ENGINEER OF RECORD.

Deflection Clips:

1. Steel: ASTM A653/A653M, SQ Grade 40, 40 ksi (275 MPa) minimum yield strength, 55 ksi (370 MPa) minimum tensile strength, G 60 hot-dipped galvanized coating

Steel Sizer Used

- | | |
|-----------|--|
| DC - 1700 | 12 GA angle 14 GA Back Plate |
| DC - 1500 | 12 GA angle 12 GA Insert |
| DS - 1700 | 12 GA angle Strut and 14 GA Back Plate |
| DS - 1500 | 12 GA angle Strut and 12 GA Insert |
| HVDC 1700 | 12 GA Slide Base |
| | 12 GA angle and 14 GA Back Plate |
| HVDC 1500 | 12 GA Slide Base |
| | 12 GA angle and 12 GA Insert |
| ETTC 1500 | 14 GA angle and 12 GA Insert |
| ITTC 450 | 18 GA angle and 14 GA Insert |
2. Material design thickness for material used:
 - 12 GA .097 inches (2.46 mm) min.
 - 14 GA .072 inches (1.82 mm) min.
 - 18 GA .043 inches (1.09 mm) min.

FINISHES Article:

IF SPECIFICATION INCLUDES FINISHES FOR CLIPS, ACCESSORIES, ETC., DELETE OR VERIFY THAT SPECIFIED FINISHES DO NOT CONFLICT WITH GALVANIZED COATING SPECIFIED ABOVE.

END OF SPECIFICATIONS

SECTION 09260 - GYPSUM BOARD ASSEMBLIES

THESE SPECIFICATIONS ARE INTENDED TO ASSIST DESIGN PROFESSIONALS IN MODIFYING CONSTRUCTION SPECIFICATION INSTITUTE (CSI) FORMATTED 3-PART SPECIFICATIONS TO INCLUDE SUPER STUD BUILDING PRODUCTS FRAMING ACCESSORIES IN SECTION 09260

WHILE SOME ARTICLE/PARAGRAPH TITLES MAY VARY DEPENDING ON THE PARTICULAR GUIDE SPECIFICATION BEING USED. THESE SPECIFICATIONS FOLLOW CSI'S SECTION FORMAT AND THEREFORE MAY BE USED WITH MOST MASTER SPECIFICATION SYSTEMS WITH MINOR EDITING.

NOTES TO THE SPECIFIER ARE CONTAINED IN BOXES-DELETE FROM FINAL COPY.

PART 1 - GENERAL

REFERENCES Article (If used):

VERIFY THAT ARTICLE INCLUDES AISI - AMERICAN IRON AND STEEL INSTITUTE SPECIFICATION FOR THE DESIGN OF COLD-FORMED STEEL STRUCTURAL MEMBERS AND ASTM A 653/A 653M - STANDARD SPECIFICATION FOR STEEL SHEET, ZINC-COATED (GALVANIZED) OR ZINC-IRON ALLOY COATED (GALVANNEALED) BY THE HOT DIP PROCESS.

SUBMITTALS Articles:

Product Data: VERIFY THAT PRODUCT DATA FOR ACCESSORIES IS INCLUDED

Shop Drawing: INCLUDE THE FOLLOWING STATEMENT

Provide wall sections coordinated with Drawing showing anchorage and connection details for cold-formed metal framing and accessories.

QUALITY ASSURANCE Articles: INCLUDE THE FOLLOWING STATEMENT

Structural Properties: Calculate structural properties of cold-formed metal framing and accessories in accordance with AISI Specification for the Design of Cold Formed Steel Structural Members.

PART 2 - PRODUCTS

MANUFACTURERS Article:

INCLUDE THE FOLLOWING IN THE LIST OF MANUFACTURERS PRODUCTS

Super Stud Building Products, Inc., contact 1-866-STUD CLP;
Vertical Deflection Clip DC 1700 and 1500, Horizontal & Vertical Drift Clip HVDC 1700 and 1500, Vertical Deflection Strut DS 1700 and 1500, Exterior Top Track Clip ETTC 1500 and Interior Top Track Clip ITTC 450.

FRAMING MATERIALS Article: FURRING, FRAMING AND ACCESSORIES Paragraph: IN CLUE THE FOLLOWING STATEMENT; VERIFY CLIPS ARE IDENTIFIED ON DRAWINGS.

Deflection Clips:

1. Steel: ASTM A653/A653M, SQ Grade 40, 40 ksi (275 MPa) minimum yield strength, 55 ksi (379 MPa) minimum tensile strength, G 60 hot-dipped galvanized coating.
2. Material design thickness for material used:
 - 12 GA .097 inches (2.46 mm) min.
 - 14 GA .072 inches (1.82 mm) min.
 - 18 GA .043 inches (1.09 mm) min.

**Super Stud**
Building Products, Inc.

CALL 1-866-STUD-CLP



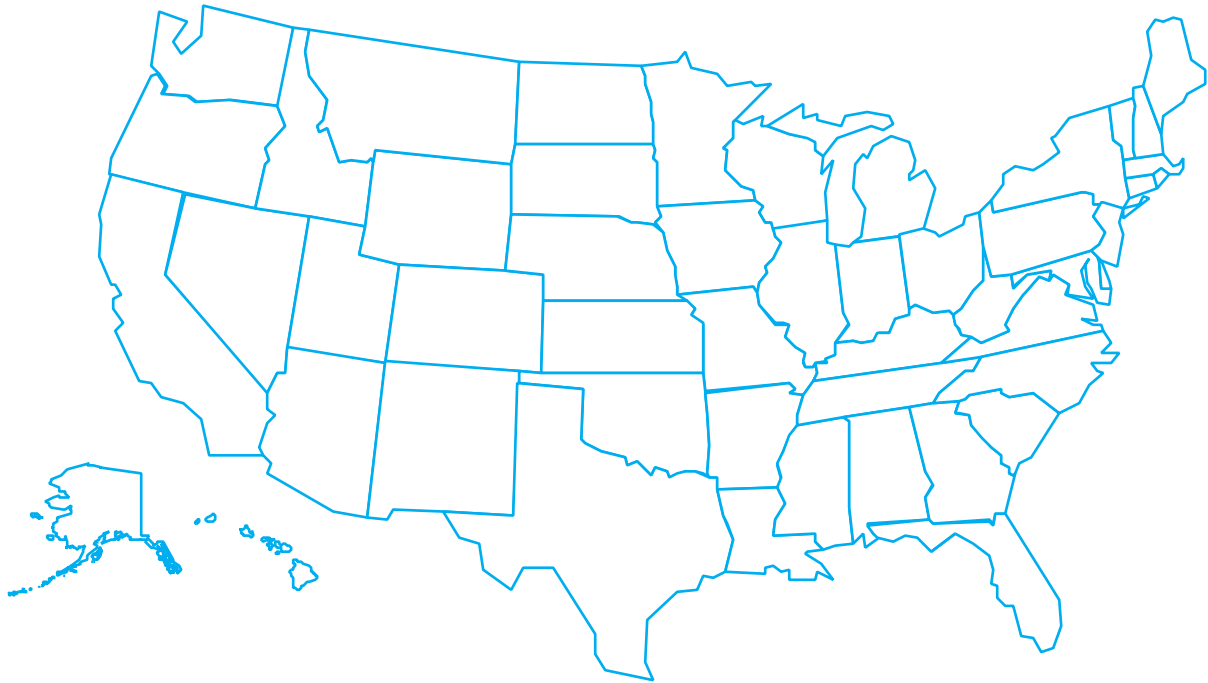
Company Overview

Since 1973, **Super Stud Building Products, Inc.** has been a proud manufacturer of the industries most diverse offering of steel framing components and accessories for use in the construction of commercial, institutional and residential structures.

Our commitment to quality products and prompt service has allowed us to expand to markets including the entire East coast and beyond. Our team of professionals in sales, customer service and production are committed to furnishing competitive pricing and timely deliveries for the full term of a project.

At Super Stud Building Products we realize your reputation is the key to success, and our guarantee to you, is to provide superior quality products.

CALL FOR NATIONWIDE INFORMATION



CALL 1-866-STUD CLP
(7 8 8 3 2 5 7)

FOR

- **DEALERS IN YOUR AREA**
- **TECHNICAL SUPPORT**
- **ORDERING INFORMATION**

**Super
Stud**

Building Products, Inc.

4-57 26th Ave. • Astoria, NY 11102

Call 1-866-STUD CLP or 1-718-545-5700

Fax 1-718-626-4417
(7 8 8 3 2 5 7)

Visit Our Web Site at www.BuySuperStud.com

E-Mail: clps@buysuperstud.com

Catalog SSC[©] Copyright 2000 Super Stud Building Products, Inc.
1000.05.2001