

## S/HJCT Steel-Joist Connectors

S/HJCT connectors are unique, skewable steel-joist framing connectors that combine strength, versatility and low installed cost. The connectors can be used with CFS headers, wood headers, steel I-beams (with welds or PAF fasteners) and masonry walls. Installed cost is minimized since these products are shear rather than bearing connectors, eliminating the need for web stiffeners. The connectors also feature horizontal tabs that facilitate top flange alignment and joist support during screw installation.

Material: S/HJCT—97 mil (12 ga)

Finish: Galvanized

Features:

- Uni-directional: Joist can be attached from left or right
- One size fits joists 8" through 14" deep.
- Optional holes for additional load capacity.
- Simplicity of design.
- Quick and easy installation.
- Field skewable up to 45° left or right.

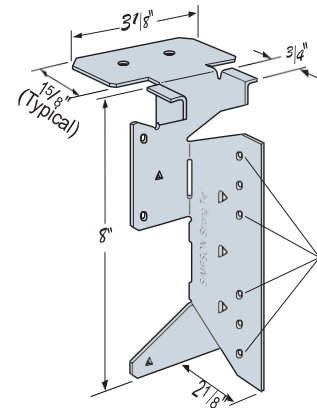
Installation:

- Attach hanger with specified fasteners. Use round holes for minimum load, use round and triangle holes for maximum load.
- May be used for weld-on applications. The minimum required weld to the top flange is 1/8" x 21/2" fillet weld to each side of top flange. Consult the code for special considerations when welding galvanized steel.
- May be installed using PDPAT-62KP (0.157" x 5/8") powder-actuated fasteners. Steel headers with thicknesses between 1/4" and 3/4" having a minimum Fy = 36 ksi. A Red (level 5) or Purple (level 6) powder load may be required to achieve specified penetration (p).

Ordering Information: The S/HJCT is sold in kits as the S/HJCT-KT and contains five (5) connectors and (95) #14 screws.

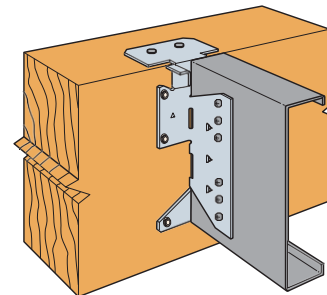
**SIMPSON**

**Strong-Tie**



Required joist fasteners for weld and P.A.T. applications

S/HJCT  
U.S. Patent 6,230,467



S/HJCT Installation with a 4x10 Wood Header

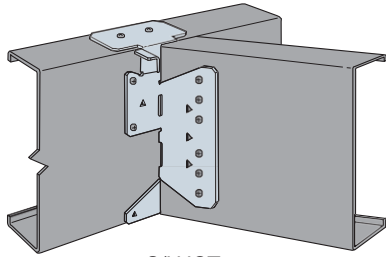
1. Allowable loads are based on a minimum of single 54 mil (16 ga) CFS joist member. CFS joist shall be laterally braced per Designer specification.
2. Allowable loads for wood header are based on 4x DF/SP minimum, for SPF/HF wood species use an adjustment factor of 0.72.
3. CFS header must be braced to prevent web buckling per Designer specification and header must have full bearing of 15/8" flange-depth.
4. Backing in the steel beam cavity is not required behind the hanger for load listed.
5. Screws shall be installed using joist hanger holes screwing through the hanger into the joist.
6. CFS joists with up to a 0.50" gap (short cut), use an adjustment factor of 0.87 and joists with a 0.50" to 0.90" gap (short cut), use an adjustment factor of 0.75.
7. See www.strongtie.com for more information on Simpson Strong-Tie fasteners.

Product manufactured by SIMPSON STRONG-TIE COMPANY INC. and sold by Super Stud Building Products, Inc.

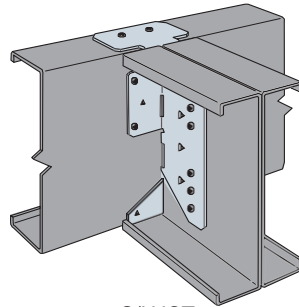
Model No.	Fasteners <sup>7</sup>			Allowable Loads <sup>1</sup>		Code Ref.	
	Top	Face	Joist	Uplift	Down		
Attached to CFS Header: 54 mil (16 ga) <sup>3</sup> – Straight Hanger							
S/HJCT (min)	2-#10	4-#14	6-#14	1510	2920	IP1 L2 F4	
S/HJCT (max)	2-#10	8-#14	9-#14	1670	3855		
Attached to CFS Header: 54 mil (16 ga) <sup>3</sup> – Skewed Hanger							
S/HJCT (min)	2-#10	4-#10	6-#14	1510	2305		
Attached to Steel Header <sup>4</sup> – Straight and Skewed Hanger							
S/HJCT (min)	1/8" x 2 1/2" fillet weld to each side of top flange		4-#14	195	1450		
S/HJCT (min) Skew			4-#14	195	1235		
S/HJCT (min)	2 – 0.157" x 5/8" Powder-actuated fastener		4-#14	195	1185		
Attached to Masonry – Straight and Skewed Hanger							
S/HJCT (min)	2-1/4" x 21/4" Titen	4-1/4" x 21/4" Titen	6-#14	710	1785		
S/HJCT (min) Skew				710	1410		

Model No.	Fasteners <sup>7</sup>			Allowable Loads <sup>1,2</sup>		Code Ref.	
	Top	Face	Joist	Uplift (160)	Down (100)		
Attached to 4x DF/SP Wood Header – Straight Hanger							
S/HJCT (min)	2-10d	4-1/4"x3" SDS	6-#14	1210	2625	IP1 L2 F4	
S/HJCT (max)	2-10d	8-1/4"x3" SDS	9-#14	1475	2980		
Attached to 4x DF/SP Wood Header – Skewed Hanger							
S/HJCT (min)	2-10d	4-1/4"x3" SDS	6-#14	1210	1935		

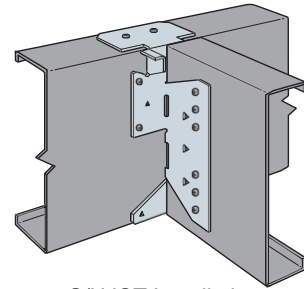
# S/HJCT Steel-Joist Connectors



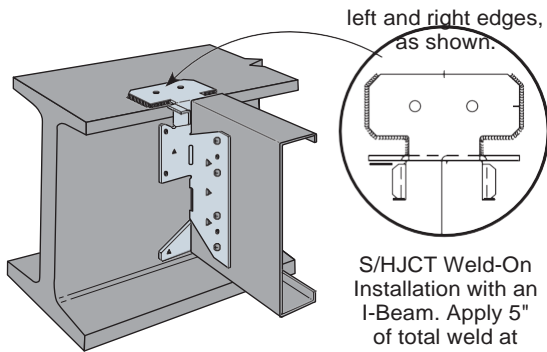
S/HJCT  
Skewed 45° Installation



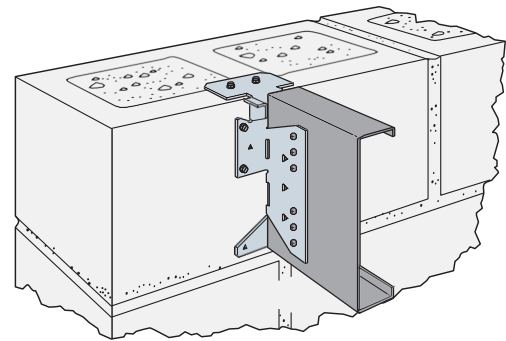
S/HJCT  
Double-Joist Installation



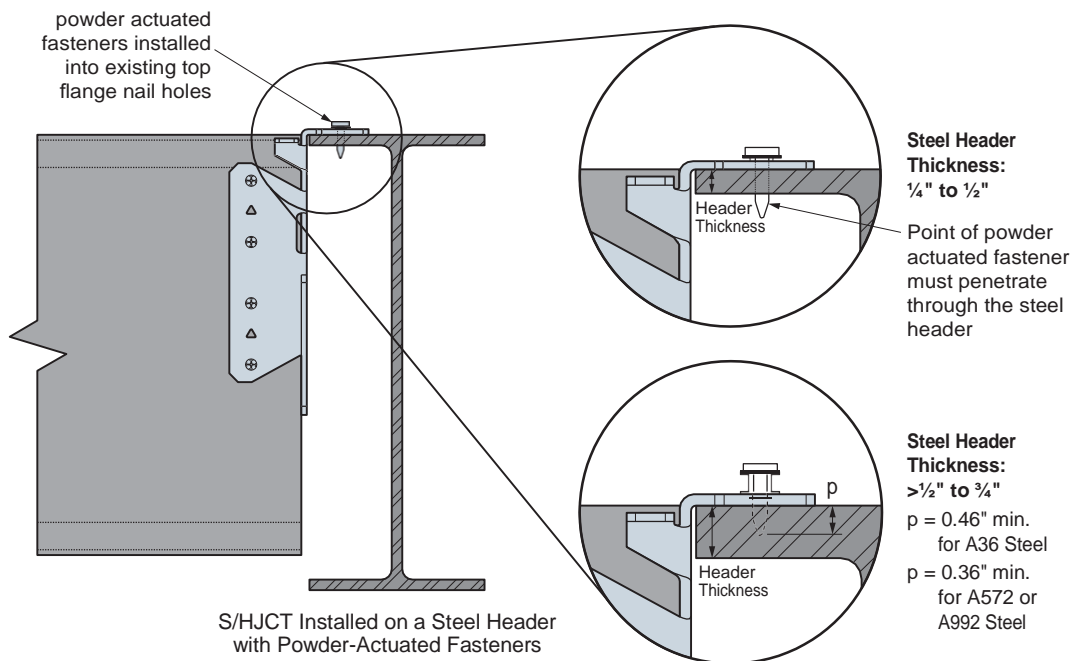
S/HJCT Installation  
with a CFS Steel Header



S/HJCT Weld-On  
Installation with an  
I-Beam. Apply 5"  
of total weld at



S/HJCT Installation  
on Masonry Header



S/HJCT Installed on a Steel Header  
with Powder-Actuated Fasteners

**Steel Header  
Thickness:**  
1/4" to 1/2"

Point of powder  
actuated fastener  
must penetrate  
through the steel  
header

**Steel Header  
Thickness:**  
>1/2" to 3/4"

p = 0.46" min.  
for A36 Steel  
p = 0.36" min.  
for A572 or  
A992 Steel