

**Product Category:** structural metal stud framing: specification section 05 40 00  
**Available Coatings:** G60 (standard)  
**Product Name:** Super Stud Solid Blocking  
**Product Description:** Stiffened plate to brace joists, made of 43 mil steel

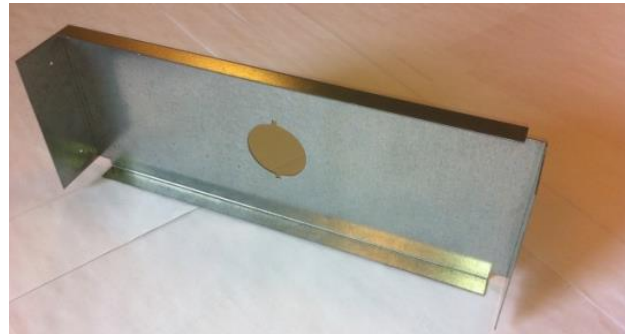
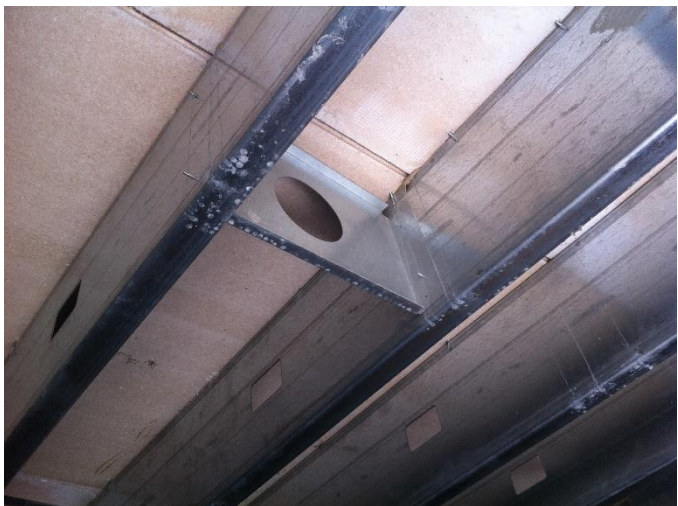
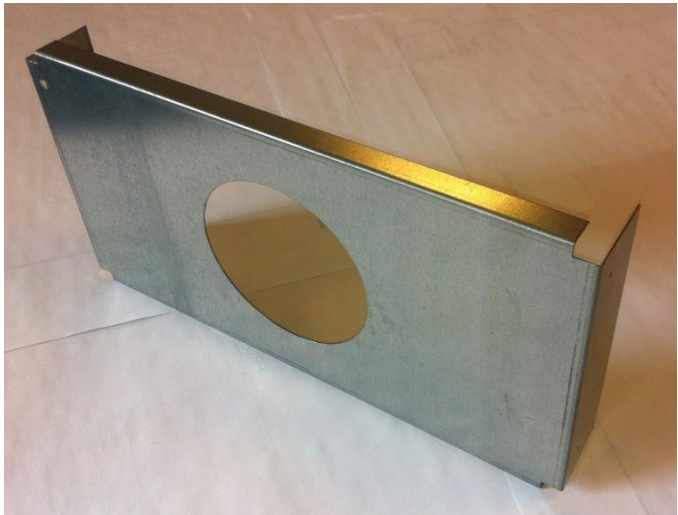
**Material and Shape Property Notes:**

**Flange width:** 2 inches • **Web Depth:** 1-3/4" less than joist depth • **Stiffening Lip Length:** 3/4"  
**For joist sizes:** 8" joist, 10" joist, 12" joist, 14" joist & 16" joist • **For joist spacing:** 12" or 16" on center.  
**Thickness:** 43 mil • 18 gauge • 0.0451" design thickness • 0.0428" minimum thickness

**MEMBER PROPERTIES**

**Joist Sizes (order by joist depth & spacing):**

- 8" joist:** blocking depth = 6-1/4", hole diameter = 2-1/8"
- 10" joist:** blocking depth = 8-1/4", hole diameter = 5"
- 12" joist:** blocking depth = 10-1/4", hole dia. = 5"
- 14" joist:** blocking depth = 12-1/4", hole dia. = 5"
- 16" joist:** blocking depth = 14-1/4", hole dia. = 5"



**CODES & STANDARDS**

*Super Stud products comply with the applicable provisions of the following:*  
International Building Code (IBC) 2006 - 2018  
Sheet Steel: ASTM A1003 & ASTM A653  
Galvanized Coating: ASTM A653  
Members & Tolerances: ASTM C955  
Meets ASTM C1007 when installed properly in structure  
3<sup>rd</sup> Party Certification: Manufacturing verified & inspected by Home Innovation Research Labs, Inc.



**The Super Stud Building Products Family of Companies**