

1200S162-68 (Standard Punch)

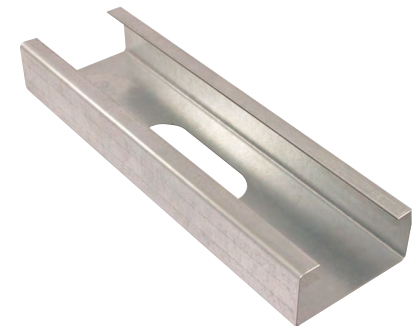
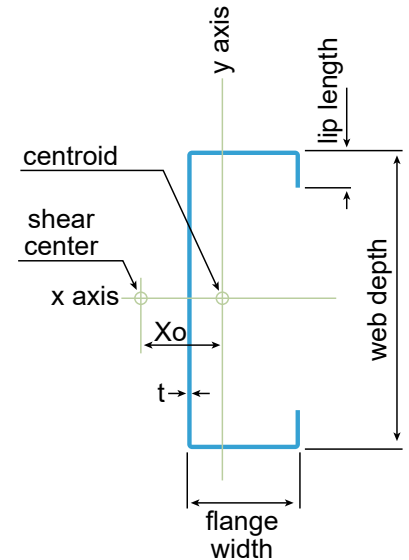
Product Description: 12" Stud 14GA (1-5/8" Flange, 68 mil)

Coating: G60 (standard), G90 (special order)

Specification Section: 05.40.00 (Cold-Formed Metal Framing)

GEOMETRIC PROPERTIES			
Web Depth	12 in.	Yield Strength, Fy	50 ksi
Flange Width	1.625 in.	Design Thickness	0.0713 in.
Lip Length	0.500 in.	Min. Steel Thickness	0.0677 in.

GROSS PROPERTIES		
Area (in ²)	Total cross-sectional steel area	1.121
Weight (lb/ft)	Linear weight per foot	3.811
I _x (in ⁴)	Moment of inertia about the x-axis	19.519
S _x (in ³)	Section modulus about the x-axis	3.253
R _x (in)	Radius of gyration about the x-axis	4.173
I _y (in ⁴)	Moment of inertia about the y-axis	0.256
R _y (in)	Radius of gyration about the y-axis	0.479
EFFECTIVE PROPERTIES		
I _x (in ³)	Effective moment of inertia (x-axis)	17.405
S _x (in ³)	Effective section modulus (x-axis)	2.591
M _a (in-k)	Allowable bending moment-effective section modulus	77.578
M _{ad} (in-k)	Allowable bending moment-distortional buckling	63.228
V _g (lb)	Allowable shear force in web	2770
V _{a_net} (lb)	Allowable strong axis shear at punchout	2770
TORSIONAL PROPERTIES		
J x 1000 (in ⁴)	St. Venant torsional constant	1.899
C _w (in ⁶)	Warping constant	7.270
X _o (in)	Distance from shear center to centroid	0.709
m (in)	Distance from shear center to mid-plane of web	0.475
R _o (in)	Polar radius of gyration	4.260
Beta	Torsional Flexural Constant	0.972



First punchout is centered 12" from beginning of member; subsequent punchouts are 24" on center (o.c.). Center of last punchout is no less than 12" from end of member.

CODES AND STANDARDS:

Super Stud/EB Metal US products comply with the applicable provisions of the following:

- International Building Code (IBC): 2006–2024
- AISI S100-16 (2020) w/S2-20
- Sheet Steel: ASTM A1003/A1003M; ASTM A653/A653M
- Galvanized Coating: ASTM A653/A653M

Structural Members:

- ASTM C955; AISI S240
- Installed per ASTM C1007

Additional Standards:

- AISI S201; AISI S202

3rd Party Certification

For LEED Letter requests please submit through:
www.buysuperstud.com or www.ebmetal.us