

800S300-68 (Standard Punch)

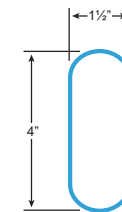
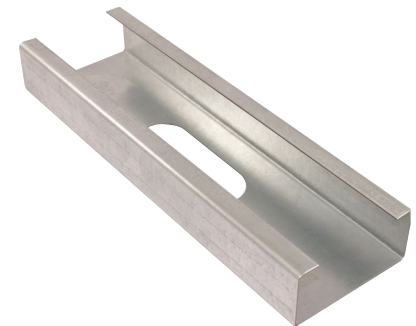
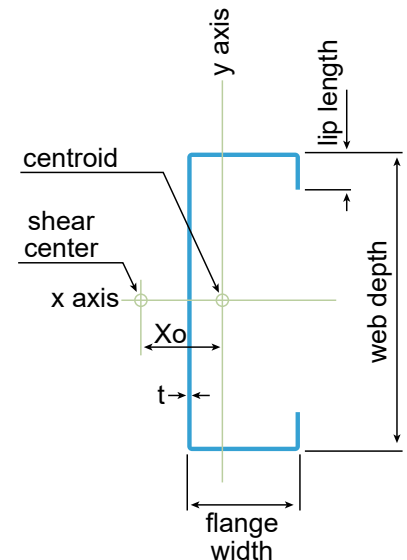
Product Description: 8" Stud 14GA (3" Flange, 68 mil)

Coating: G60 (standard), G90 (special order)

Specification Section: 05.40.00 (Cold-Formed Metal Framing)

GEOMETRIC PROPERTIES			
Web Depth	8 in.	Yield Strength, F_y	50 ksi
Flange Width	3 in.	Design Thickness	0.0713 in.
Lip Length	0.625 in.	Min. Steel Thickness	0.0677 in.

GROSS PROPERTIES		
Area (in ²)	Total cross-sectional steel area	1.050
Weight (lb/ft)	Linear weight per foot	3.57
I_x (in ⁴)	Moment of inertia about the x-axis	10.384
S_x (in ³)	Section modulus about the x-axis	2.596
R_x (in)	Radius of gyration about the x-axis	3.145
I_y (in ⁴)	Moment of inertia about the y-axis	1.179
R_y (in)	Radius of gyration about the y-axis	1.060
EFFECTIVE PROPERTIES		
I_x (in ³)	Effective moment of inertia (x-axis)	10.125
S_x (in ³)	Effective section modulus (x-axis)	2.124
M_a (in-k)	Allowable bending moment-effective section modulus	63.58
M_{ad} (in-k)	Allowable bending moment-distortional buckling	53.66
V_a (lb)	Allowable shear force in web	4220
$V_{a_{net}}$ (lb)	Allowable strong axis sheer at punchout	3367
TORSIONAL PROPERTIES		
$J \times 1000$ (in ⁴)	St. Venant torsional constant	1.779
C_w (in ⁶)	Warping constant	14.888
X_o (in)	Distance from shear center to centroid	-2.055
m (in)	Distance from shear center to mid-plane of web	1.262
R_o (in)	Polar radius of gyration	3.904
Beta	Torsional Flexural Constant	0.723



First punchout is centered 12" from beginning of member; subsequent punchouts are 24" on center (o.c.). Center of last punchout is no less than 12" from end of member.

CODES AND STANDARDS:

Super Stud/EB Metal US products comply with the applicable provisions of the following:

- International Building Code (IBC): 2006–2024
- AISI S100-16 (2020) w/S2-20
- Sheet Steel: ASTM A1003/A1003M; ASTM A653/A653M
- Galvanized Coating: ASTM A653/A653M

Structural Members:

- ASTM C955; AISI S240
- Installed per ASTM C1007

Additional Standards:

- AISI S201; AISI S202

3rd Party Certification

For LEED Letter requests please submit through:
www.buysuperstud.com or www.ebmetal.us

NEW HAMPSHIRE FACILITY
 12 TALLWOOD DRIVE
 BOW, NH 03304
 P: 603-216-1573

MISSISSIPPI FACILITY
 53 W L RUNNELS IND DR
 HATTIESBURG, MS 39401
 P: 601-584-7550

NEW JERSEY FACILITY
 2960 WOODBRIDGE AVE
 EDISON, NJ 08837
 P: 732-662-6200