

1000SMX350-118

Product Description: 10" SuperMAXX Joist 10GA (3-1/2" Flange, 118mil)

Coating: G60 (standard), G90 (special order)

Specification Section: 05.40.00 (Cold-Formed Metal Framing)

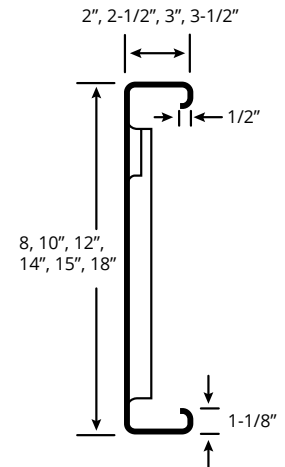


GEOMETRIC PROPERTIES			
Web Depth	10 in.	Yield Strength, Fy	50 ksi
Flange Width	3.50 in.	Design Thickness	0.1242 in.
Lip Length 1	1.125 in.	Min. Steel Thickness	0.1180 in.
Lip Length 2	0.50 in.		

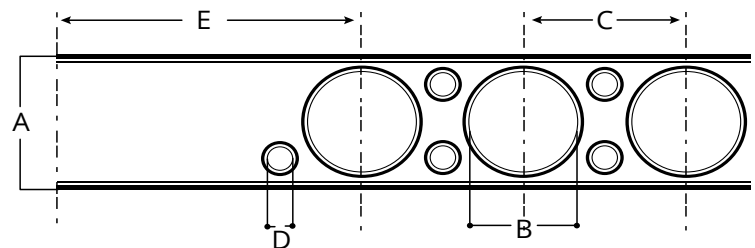
GROSS PROPERTIES		
Area (in ²)	Total cross-sectional steel area	2.3430
Weight (lb/ft)	Linear weight per foot	7.9662
I _x (in ⁴)	Moment of inertia about the x-axis	35.3077
S _x (in ³)	Section modulus about the x-axis	7.0615
R _x (in)	Radius of gyration about the x-axis	3.8819
I _y (in ⁴)	Moment of inertia about the y-axis	3.9960
R _y (in)	Radius of gyration about the y-axis	1.3059

EFFECTIVE PROPERTIES		
Max (in-k)	Maximum allowable bending moment	180.8351
I _{xe} (in ⁴)	Effective moment of inertia (x-axis)	32.8023
S _{xe} (in ³)	Effective section modulus (x-axis)	6.5268
V _{ay} (k)	Maximum allowable shear force about the y-axis	3151.5

TORSIONAL PROPERTIES		
J x 1000 (in ⁴)	St. Venant torsional constant	12.048
C _w (in ⁶)	Warping constant	85.569
X _o (in)	Distance from shear center to centroid	2.688
R _o (in)	Polar radius of gyration	4.899
Beta	Torsional Flexural Constant	0.699



TYPICAL JOIST MEMBER SIZING				
A	B	C	D	E
Section Web Depth (in)	Large Hole Diameter (in)	Large Hole Spacing (in o.c.)	Small Hole Diameter (in)	Minimum Distance from End to Center of First Large Hole (in)
10	6.125	12	2.25	33



CODES AND STANDARDS:

Super Stud/EB Metal US products comply with the applicable provisions of the following:

- International Building Code (IBC): 2006–2024
- AISI S100-16 (2020) w/S2-20
- Sheet Steel: ASTM A1003/A1003M; ASTM A653/A653M
- Galvanized Coating: ASTM A653/A653M

Structural Members:

- ASTM C955; AISI S240
- Installed per ASTM C1007

Additional Standards:

- AISI S201; AISI S202

3rd Party Certification

For LEED Letter requests please submit through:
www.buysuperstud.com or www.ebmetal.us

NEW HAMPSHIRE FACILITY
 12 TALLWOOD DRIVE
 BOW, NH 03304
 P: 603-216-1573

MISSISSIPPI FACILITY
 53 W L RUNNELS IND DR
 HATTIESBURG, MS 39401
 P: 601-584-7550

NEW JERSEY FACILITY
 2960 WOODBRIDGE AVE
 EDISON, NJ 08837
 P: 732-662-6200