

600S200-118 (Standard Punch)

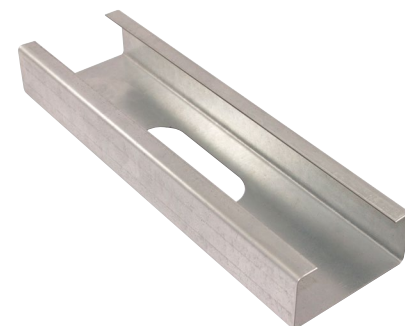
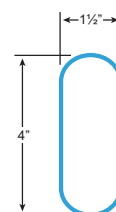
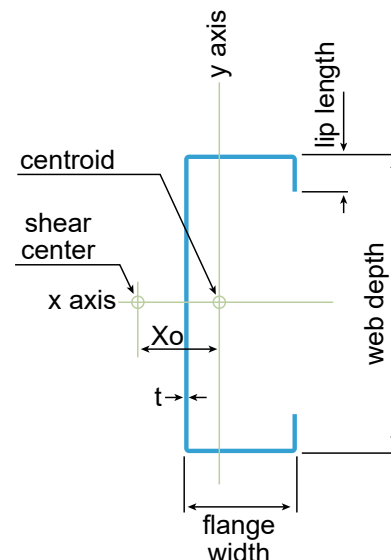
Product Description: 6" Stud 10GA (2" Flange, 118 mil)

Coating: G60 (standard), G90 (special order)

Specification Section: 05.40.00 (Cold-Formed Metal Framing)

GEOMETRIC PROPERTIES			
Web Depth	6 in.	Yield Strength, F_y	50 ksi
Flange Width	2 in.	Design Thickness	0.1242 in.
Lip Length	0.625 in.	Min. Steel Thickness	0.1180 in.

GROSS PROPERTIES		
Area (in ²)	Total cross-sectional steel area	1.283
Weight (lb/ft)	Linear weight per foot	4.36
I_x (in ⁴)	Moment of inertia about the x-axis	6.643
S_x (in ³)	Section modulus about the x-axis	2.214
R_x (in)	Radius of gyration about the x-axis	2.276
I_y (in ⁴)	Moment of inertia about the y-axis	0.612
R_y (in)	Radius of gyration about the y-axis	0.691
EFFECTIVE PROPERTIES		
I_x (in ³)	Effective moment of inertia (x-axis)	6.646
S_x (in ³)	Effective section modulus (x-axis)	2.204
M_a (in-k)	Allowable bending moment-effective section modulus	78.09
M_{ad} (in-k)	Allowable bending moment-distortional buckling	77.88
V_a (lb)	Allowable shear force in web	12526
$V_{a_{net}}$ (lb)	Allowable strong axis shear at punchout	3622
TORSIONAL PROPERTIES		
$J \times 1000$ (in ⁴)	St. Venant torsional constant	6.595
C_w (in ⁶)	Warping constant	4.753
X_o (in)	Distance from shear center to centroid	-1.351
m (in)	Distance from shear center to mid-plane of web	0.845
R_o (in)	Polar radius of gyration	2.736
Beta	Torsional Flexural Constant	0.756



First punchout is centered 12" from beginning of member;
subsequent punchouts are 24" on center (o.c.). Center of last
punchout is no less than 12" from end of member.

CODES AND STANDARDS:

Super Stud products comply with the applicable provisions of the following:

- International Building Code (IBC): 2006–2024
- AISI S100-16 (2020) w/S2-20 (effective properties include cold-work strength increase)
- Sheet Steel: ASTM A1003/A1003M; ASTM A653/A653M
- Galvanized Coating: ASTM A653/A653M

Structural Members:

- ASTM C955; AISI S240
- Installed per ASTM C1007

Additional Standards:

- AISI S201; AISI S202

3rd Party Certification

For LEED Letter requests please submit through: www.buysuperstud.com