

THE EDGE™ FRAMING SYSTEM FIRE RATING & SOUND ASSEMBLIES

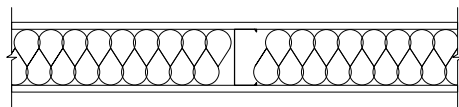
INTERIOR NON-BEARING WALL RATINGS

Certified by Western Electro-Acoustic Laboratories

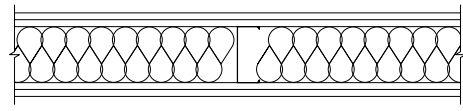


Hour Rating	Wall Depth	Stud Depth	STC Rating	STC RSIC-V&1	Layers of Gypsum	Insulation R-Value	Sound Test	Stud Spacing	The EDGE™ (Mils)*
1	3 1/2"	2 1/2"	47		1 layer/1 layer of 1/2"	1 1/2" SAFB	SA-831001	24"	19
1	3 1/2"	2 1/2"	48 Est.		1 layer/1 layer of 1/2"	1 1/2" SAFB	Estimate	24"	15
1	4"	2 1/2"	50	RC-1	1 layer/1 layer of 1/2"	1 1/2" SAFB	RAL TL87-156	24"	19
1	4"	2 1/2"	50		1 layer/2 layer of 1/2"	1 1/2" SAFB	SA-800504	24"	19
1	4 7/8"	3 5/8"	49		1 layer/1 layer of 5/8"	R-13	WEAL TL10-588	16"	15
1	4 7/8"	3 5/8"	49		1 layer/1 layer of 5/8"	3" SAFB	SA-870717	24"	19
1	4 7/8"	3 5/8"	51		1 layer/1 layer of 5/8"	R-13	WEAL TL10-591	24"	15
1	5 3/8"	3 5/8"	54	RC-1	1 layer/1 layer of 5/8"	3" SAFB	RAL-TL83-216	24"	23
1	5 3/8"	3 5/8"	54	RC-1	1 layer/1 layer of 5/8"	3" SAFB	RAL-TL83-216	24"	19
1	5 3/8"	3 5/8"	56 Est.	RC-1	1 layer/1 layer of 5/8"	3" SAFB	Estimate	24"	15
1	5 1/2"	3 5/8"	53		1 layer/2 layer of 5/8"	R-13	WEAL TL10-587	16"	15
1	5 1/2"	3 5/8"	56		1 layer/2 layer of 5/8"	R-13	WEAL TL10-590	24"	15
1	6"	3 5/8"	53	RSIC-V®	1 layer/1 layer of 5/8"	R-19	WEAL TL07-636	24"	23
1	6"	3 5/8"	58	RC-1	1 layer/2 layer of 5/8"	3" SAFB	RAL-TL83-215	24"	23
1	6 1/2"	3 5/8"	58	RSIC-1®	1 layer/1 layer of 5/8"	R-19	RAL-TL87-156	24"	23
1	6 1/2"	3 5/8"	58	RSIC-1®	1 layer/1 layer of 5/8"	R-19	RAL-TL05-013	24"	23
1	6 5/8"	3 5/8"	59	RSIC-V®	1 layer/2 layer of 5/8"	R-19	WEAL TL07-641	24"	23
1	7 1/8"	3 5/8"	61	RSIC-1®	1 layer/2 layer of 5/8"	R-19	RAL TL05-012	24"	23
2	3 5/8"	1 5/8"	51 Est.		2 layer/2 layer of 1/2"	1 1/2" SAFB	Estimate	24"	15
2	4 1/8"	1 5/8"	54 Est.		2 layer/2 layer of 5/8"	1 1/2" SAFB	Estimate	24"	15
2	5"	2 1/2"	51		2 layer/2 layer of 5/8"	2 1/2" SAFB	GA-WP-1548	24"	19
2	5"	2 1/2"	53 Est.		2 layer/2 layer of 5/8"	2 1/2" SAFB	Estimate	24"	15
2	6 1/8"	3 5/8"	57		2 layer/2 layer of 5/8"	R-13	WEAL TL10-586	16"	15
2	6 1/8"	3 5/8"	58		2 layer/2 layer of 5/8"	R-13	WEAL TL10-589	24"	15
2	7 1/4"	3 5/8"	64	RSIC-V®	2 layer/2 layer of 5/8"	R-19	WEAL TL07-642	24"	23
2	7 3/4"	3 5/8"	64	RSIC-1®	2 layer/2 layer of 5/8"	R-19	RAL TL05-011	24"	23
3	4 5/8"	1 5/8"	57 Est.		3 layer/3 layer of 1/2"	1 1/2" SAFB	Estimate	24"	15
3	4 5/8"	1 5/8"	59		3 layer/3 layer of 1/2"	1 1/2" SAFB	SA-830112	24"	19
3	5 3/8"	1 5/8"	59 Est.		3 layer/3 layer of 5/8"	1 1/2" SAFB	Estimate	24"	15
3	7 7/8"	3 5/8"	63	RC-1	3 layer/3 layer of 1/2"	3" SAFB	RAL TL87-152	24"	15
3	7 7/8"	3 5/8"	64 Est.	RC-1	3 layer/3 layer of 1/2"	3" SAFB	Estimate	24"	15
4	5 5/8"	1 5/8"	62		4 layer/4 layer of 1/2"	1 1/2" SAFB	SA-830113	24"	19
4	5 5/8"	1 5/8"	62 Est.		4 layer/4 layer of 1/2"	1 1/2" SAFB	Estimate	24"	15
4	6 5/8"	1 5/8"	63 Est.		4 layer/4 layer of 5/8"	1 1/2" SAFB	Estimate	24"	15

Superior STC results achieved by The EDGE™ 25 drywall stud:



1-hour STC 51



2-hour STC 58

- Tested results achieved using NO RC-1 channel, saving time and cost, while producing superior results.
- Decibel rules of thumb for The EDGE™ studs (15 mil) - adding resilient channels adds 2-3 STC points of 1 & 1 construction, 3-4 STC points for 2 & 1 construction, and 5 STC points for 2 & 2 construction.
- 1 & 1 construction means 1 layer of gypsum board on each face of the wall full height.
- 2 & 2 construction means two layers each side. Note that when it is used, resilient channel need only be applied on one side of the wall.

Notes:

- The EDGE™ 25 (15 mil)
- The EDGE™ Performance 20 (19 mil)
- The EDGE™ Super 20 (23 mil)

The EDGE™ studs and tracks are listed in Underwriters Laboratories (UL) designs:

U419, V438, V489, V498, W433, and W440.

Acoustical Performance - NVLAP Accredited for ASTM E90-09, E413-04, E2235-04 and ISO Certified Re-printed values with the consent of PAC-Intl. [RSIC-V® and RSIC-1®] Estimates are based upon physical properties computer modeling and comparative analysis of actual test results.

* Design Thickness