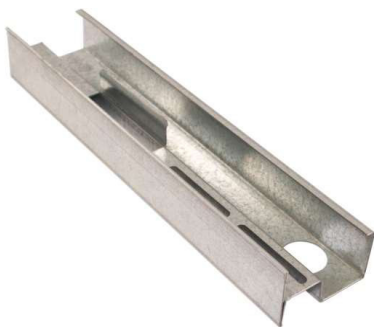


CT Shaft Wall is specified in UL Designs G586, U417, U428, U429, U497, U498, U499, V451, V455, V470, V472, V473, V481, V493

	C-T Stud Depth	Stud & Track Thickness	Deflection Limit	Uniform Load in pounds per square foot (psf,) limiting heights in feet – inches <sup>1</sup>							
				1-hour assemblies				2- and 3-hour assemblies			
				5 psf	7.5 psf	10 psf	15 psf	5 psf	7.5 psf	10 psf	15 psf
250CT137-18	2.5 INCH	18 MIL 25 GA.	L/120	14' 2"	12' 5"	11' 3"	9' 4"	15' 6"	13' 3"	11' 6"	9' 5"
			L/180	12' 5"	10' 10"	9' 10"	8' 7"	13' 7"	11' 10"	10' 9"	9' 5"
			L/240	11' 3"	9' 10"	8' 11"	7' 10"	12' 4"	10' 9"	9' 9"	8' 6"
			L/360	9' 10"	8' 7"	7' 10"	6' 10"	10' 9"	9' 5"	8' 6"	7' 6"
250CT137-33	2.5 INCH	33 MIL 20 GA.	L/120	15' 10"	13' 10"	12' 6"	10' 11"	17' 4"	15' 1"	13' 9"	12' 0"
			L/180	13' 10"	12' 1"	10' 11"	9' 7"	15' 1"	13' 2"	12' 0"	10' 6"
			L/240	12' 6"	10' 11"	9' 11"	8' 8"	13' 9"	12' 0"	10' 11"	9' 6"
			L/360	10' 11"	9' 7"	8' 8"	7' 7"	12' 0"	10' 6"	9' 6"	8' 4"
400CT137-18	4 INCH	18 MIL 25 GA.	L/120	19' 1"	15' 11"	13' 10"	11' 3"	19' 7"	15' 11"	13' 10"	11' 3"
			L/180	16' 8"	14' 6"	13' 2"	11' 3"	18' 3"	15' 11"	13' 10"	11' 3"
			L/240	15' 1"	13' 2"	12' 0"	10' 6"	16' 7"	14' 5"	13' 2"	11' 3"
			L/360	13' 2"	11' 6"	10' 6"	9' 2"	14' 5"	12' 8"	11' 6"	11' 3"
400CT137-33	4 INCH	33 MIL 20 GA.	L/120	21' 8"	18' 11"	17' 2"	15' 0"	23' 8"	20' 8"	18' 9"	15' 6"
			L/180	18' 11"	16' 6"	15' 0"	13' 1"	20' 8"	18' 1"	16' 5"	14' 4"
			L/240	17' 2"	15' 0"	13' 8"	11' 11"	18' 9"	16' 5"	14' 11"	13' 0"
			L/360	15' 0"	13' 1"	11' 11"	10' 5"	16' 5"	14' 4"	13' 0"	11' 5"
600CT137-18	6 INCH	18 MIL 25 GA.	L/120	22' 7"	18' 9"	16' 3"	12' 0"	22' 11"	18' 9"	16' 3"	12' 0"
			L/180	19' 9"	17' 3"	15' 8"	12' 0"	21' 8"	18' 9"	16' 3"	12' 0"
			L/240	17' 11"	15' 8"	14' 3"	12' 0"	19' 8"	17' 2"	15' 7"	12' 0"
			L/360	15' 8"	13' 8"	12' 5"	10' 10"	17' 2"	15' 0"	13' 8"	11' 11"
600CT137-33	6 INCH	33 MIL 20 GA.	L/120	27' 4"	23' 11"	21' 8"	19' 0"	30' 0"	26' 2"	23' 7"	19' 3"
			L/180	23' 11"	21' 11"	19' 0"	16' 7"	26' 2"	22' 11"	20' 9"	18' 2"
			L/240	21' 8"	19' 0"	17' 3"	15' 1"	23' 9"	20' 9"	18' 11"	16' 6"
			L/360	19' 0"	16' 7"	15' 1"	13' 2"	20' 9"	18' 2"	16' 6"	14' 5"

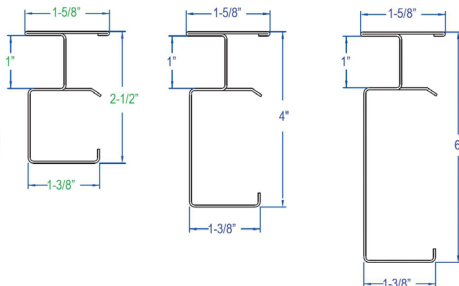
<sup>1</sup> Limiting heights are based on Warnock Hersey test reference WHI-495-TRL-0206/0225, issued August 4, 1995. Values based on deflection limits with adjustment to conform to a minimum safety factor of 1.5 for ultimate ending strength and end reaction.



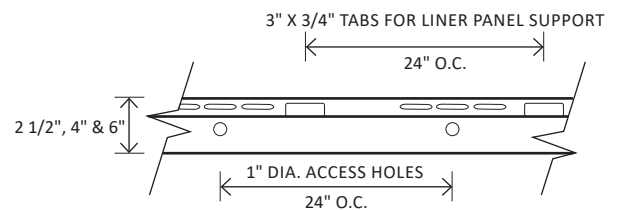
250CT137-18  
250CT137-33  
250CT137-43\*

400CT137-18  
400CT137-33  
400CT137-43\*

600CT137-18  
600CT137-33  
600CT137-43\*



Typ. CT Shaft Wall View, N.T.S.



\* NOTE - LOAD TABLE DATA FOR 43 MIL (18 GA) FORTHCOMING